



**Region 2 Barrier ID: W088 (Barrier).**

**Barrier Name:** I-80, Yuba Gap, bisects Sierra Nevada.

**Linear Infrastructure:** I-80.

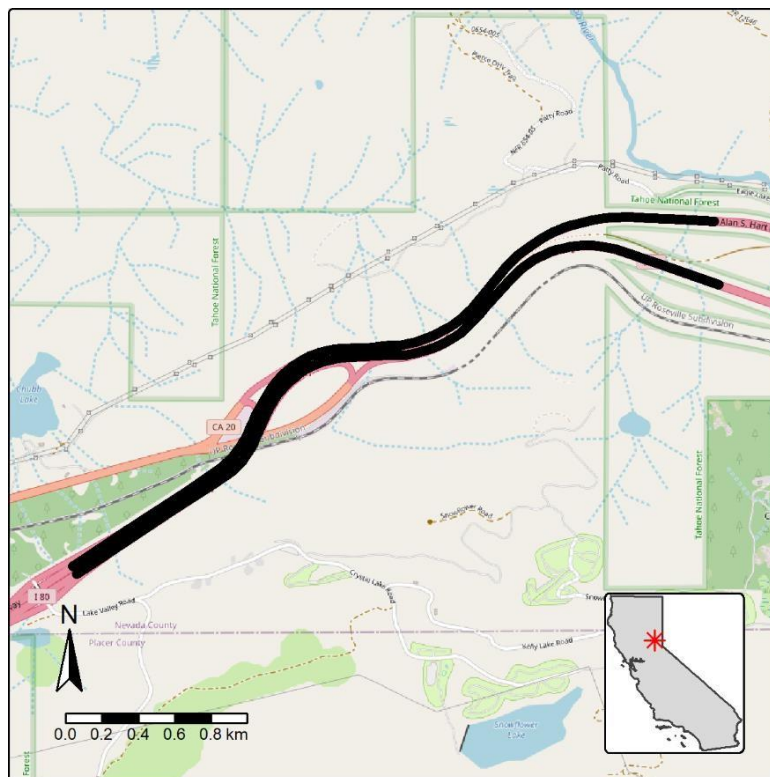
**Geographic Area:** Placer County, Yuba Gap.

**Length:** 6.57 km (4.09 mi).

**Target Species:** Deer (*Odocoileus hemionus*), mountain lion (*Puma concolor*), black bear (*Ursus americanus*).

**Connectivity Concerns:** This stretch of I-80 delineates a boundary between the migratory Nevada City, and Blue Canyon deer herds. Wildlife cannot attempt to cross the multiple lanes here and we see animal vehicle collision when they do. I-80 bisects the Sierra Nevada Mountain Range.

**Remediation Goals:** Expand and enhance existing infrastructure such as culverts and creek bridges, add new wildlife crossing structures and wildlife exclusion fencing.



**Figure:** I-80 at Yuba Gap is a Region 2 wildlife connectivity barrier.