



Region 2 Barrier ID: W089 (Barrier).

Barrier Name: I-80, Foothills.

Linear Infrastructure: I-80.

Geographic Area: Placer County, I-80 from Auburn East to Magra.

Length: 32.15 km (19.98 mi).

Target Species: Deer (*Odocoileus hemionus*), mountain lion (*Puma concolor*), black bear (*Ursus americanus*).

Connectivity Concerns: This stretch of I-80 delineates a boundary between the migratory Nevada City, and Blue Canyon deer herds and the resident Motherlode herd. Wildlife cannot attempt to cross the multiple lanes here and we see animal vehicle collision of multiple species (deer, bear, mountain lion) when they do. Daily and seasonal movements occur. During the fall rut dozens of deer are hit within a window of 2-3 weeks across this stretch.

Remediation Goals: Expand and enhance existing infrastructure such as culverts and creek bridges, add new wildlife crossing structures and wildlife exclusion fencing.

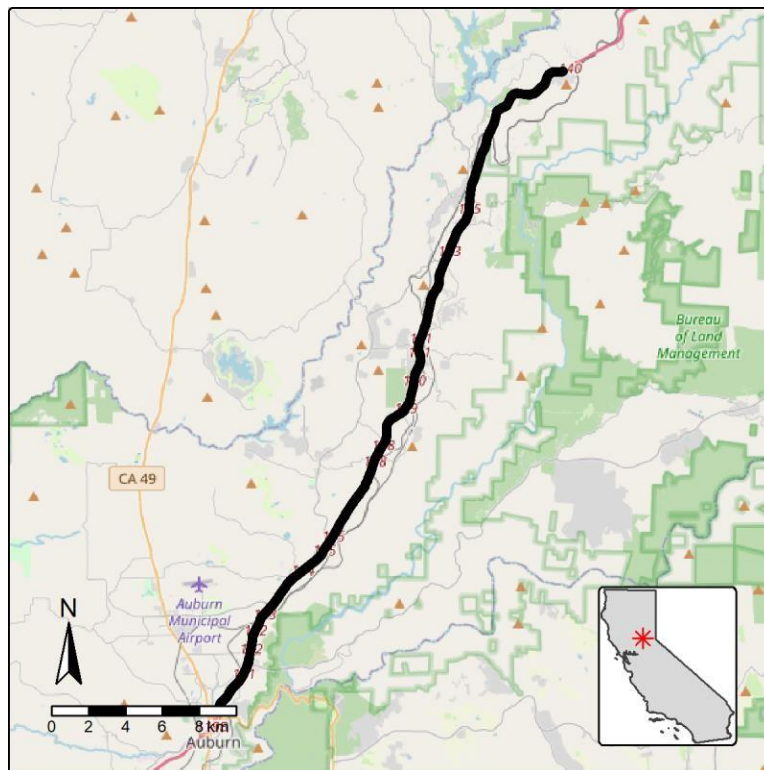


Figure: I-80 in the foothills from Auburn to Magra is a Region 2 wildlife connectivity barrier.