



Region 2 Barrier ID: W090 (Barrier).

Barrier Name: SR-20, intersection with I-80, canals.

Linear Infrastructure: SR-20.

Geographic Area: Nevada County, SR-20 from Omega to the I-80 intersection near Emigrant Gap.

Length: 6.47 km (4.02 mi)

Target Species: Deer (*Odocoileus hemionus*), mountain lion (*Puma concolor*), black bear (*Ursus americanus*).

Connectivity Concerns: This stretch of SR-20 creates a barrier through the migratory path of the Nevada City deer herd and Bear Valley. Canals and railroad tracks are also linear barriers in this area.

Remediation Goals: Expand and enhance existing infrastructure such as culverts and creek bridges, add new wildlife crossing structures and wildlife exclusion fencing.

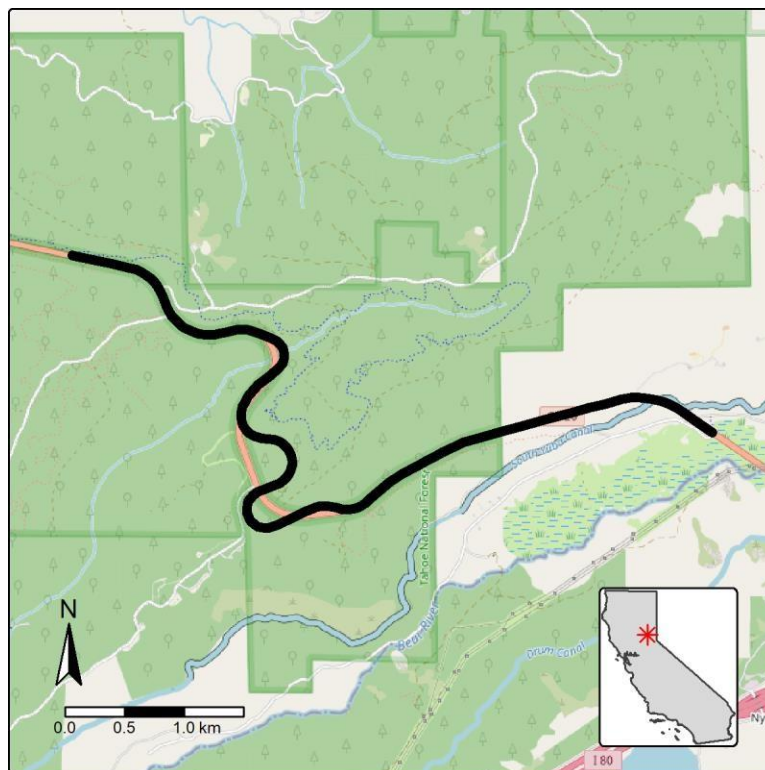


Figure: SR-20 from Omega to the intersection with I-80 is a Region 2 wildlife connectivity barrier.