



**Region 2 Barrier ID: W091 (Barrier).**

**Barrier Name:** SR-20, through Penn Valley to Yuba County line.

**Linear Infrastructure:** SR-20.

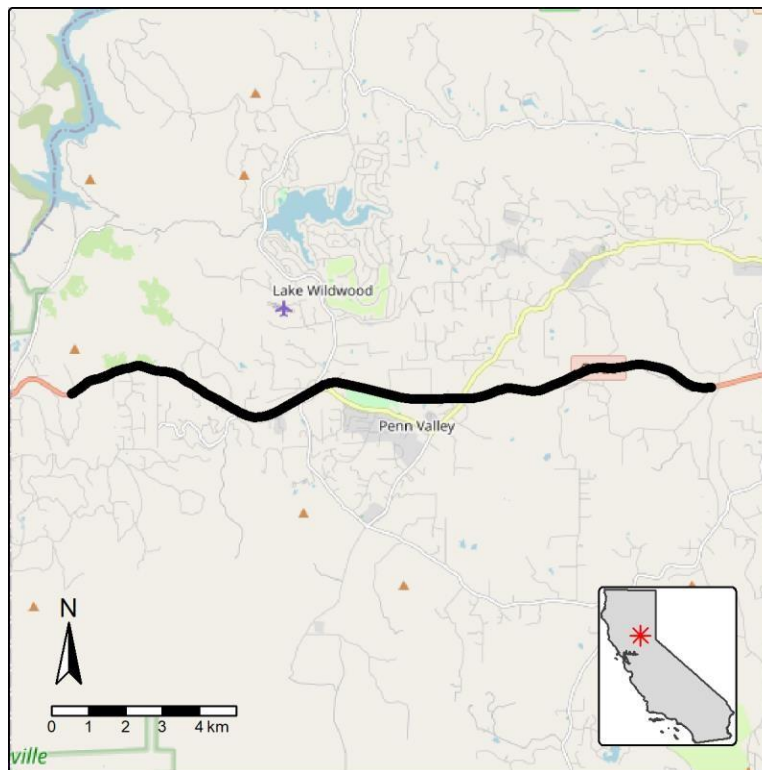
**Geographic Area:** Nevada County, SR-20 from Nevada City to the Yuba County line.

**Length:** 14.29 km (8.88 mi).

**Target Species:** Deer (*Odocoileus hemionus*), mountain lion (*Puma concolor*), black bear (*Ursus americanus*).

**Connectivity Concerns:** This stretch of SR-20 bisects the historical low elevation migration route of the Nevada City/Downieville deer herd and the resident Motherlode herd. Wildlife make daily and seasonal movements across the highway. Animal vehicle collision for multiple species occurs through the urban areas along the highway and is higher for deer during the fall rut.

**Remediation Goals:** Expand and enhance existing infrastructure such as culverts and creek bridges, add new wildlife crossing structures and wildlife exclusion fencing.



**Figure:** SR-20 from Nevada City to the Yuba County line is a Region 2 wildlife connectivity barrier.