



Region 2 Barrier ID: W092 (Barrier).

Barrier Name: SR-88, Lower Bear Reservoir to Kirkwood.

Linear Infrastructure: SR-88.

Geographic Area: Amador County, Lower Bear River Reservoir East to Kirkwood.

Length: 31.19 km (19.38 mi).

Target Species: Deer (*Odocoileus hemionus*), mountain lion (*Puma concolor*), black bear (*Ursus americanus*), gray wolf (*Canis lupus*), Rocky Mountain elk (*Cervus canadensis nelsoni*).

Connectivity Concerns: This stretch of SR-88 delineates a boundary between the migratory Grizzly Flat, and Salt Springs deer herds although California Department of Fish and Wildlife collar data indicates crossing of the highway for daily or seasonal movements (annual migration in the spring and fall). Other species cross but as the highway bisects the Sierra Nevada Mountain Range it is important to maintain connectivity. Traffic seems to be increasing on this highway. The higher elevation represents an area important for climate refugia.

Remediation Goals: Expand and enhance existing infrastructure such as culverts and creek bridges, add new wildlife crossing structures and wildlife exclusion fencing.

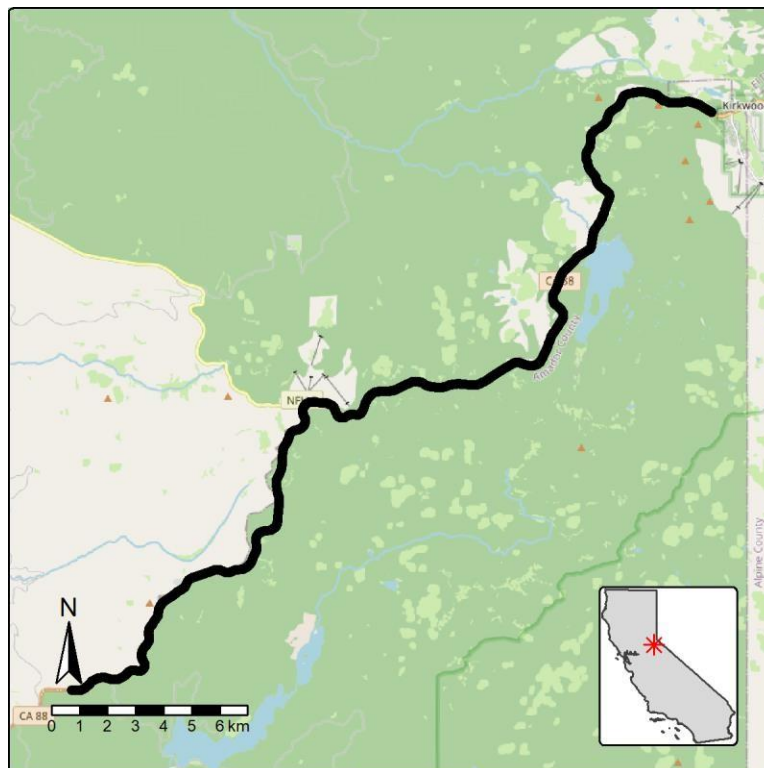


Figure: SR-88 from Lower Bear River Reservoir East to Kirkwood is a Region 2 wildlife connectivity barrier.