



Region 2 Barrier ID: W095 (Barrier).

Barrier Name: Skyway Rd and Butte Meadows.

Linear Infrastructure: Skyway County Road.

Geographic Area: Butte County, Skyway Rd off SR-99.

Length: 3.14 km (1.95 mi).

Target Species: Deer (*Odocoileus hemionus*), mountain lion (*Puma concolor*), black bear (*Ursus americanus*).

Connectivity Concerns: This stretch of Skyway Road leads out of town and is a noted spot for animal vehicle collision. Migratory deer from the Bucks Mountain/Mooretown deer herd winter here along with resident deer and make daily and seasonal movements across Skyway. The ditch and riparian corridor along Butte Creek are a draw for wildlife.

Remediation Goals: Expand and enhance existing infrastructure such as culverts and creek bridges, add new wildlife crossing structures and wildlife exclusion fencing.

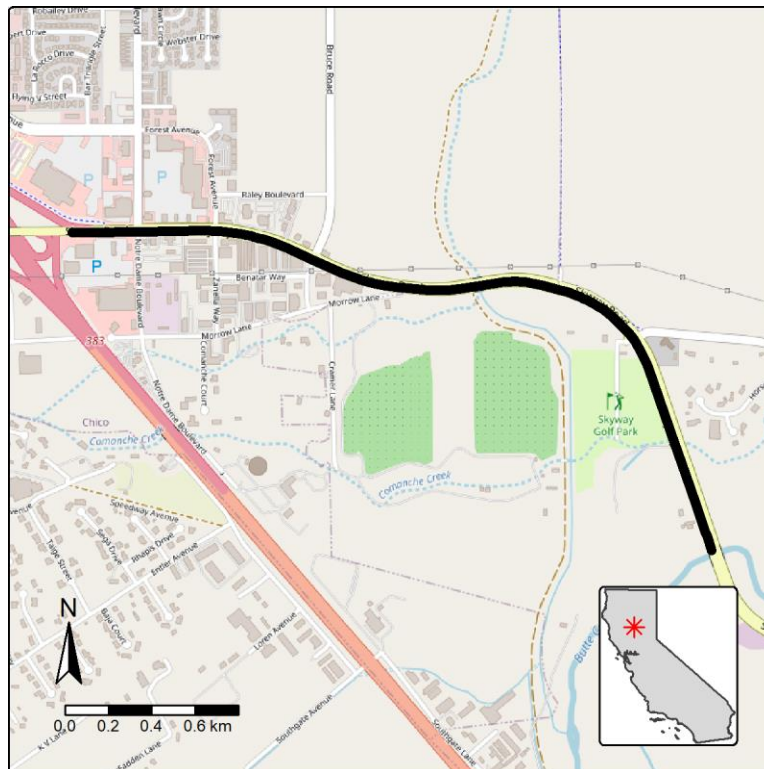


Figure: Skyway Road along Crough Ditch, east towards Butte Creek is a Region 2 wildlife connectivity barrier.