



Region 4 Barrier ID: W101 (Barrier).

Barrier Name: Prather - Huntington Lake.

Linear Infrastructure: SR-168.

Geographic Area: Prather to Huntington Lake.

Length: 56.81 km (35.30 mi).

Target Species: Black bear (*Ursus americanus*), fisher (*Pekania pennanti*), gray wolf (*Canis lupus*), mountain lion (*Puma concolor*), deer (*Odocoileus hemionus*), Yosemite toad (*Anaxyrus canorus*).

Connectivity Concerns: SR-168 bisects a known deer seasonal migration route in the Sierra Nevada Mountains.

Remediation Goals: Expand and enhance existing infrastructure such as culverts and creek bridges, add new under-crossings and wildlife exclusion fencing.

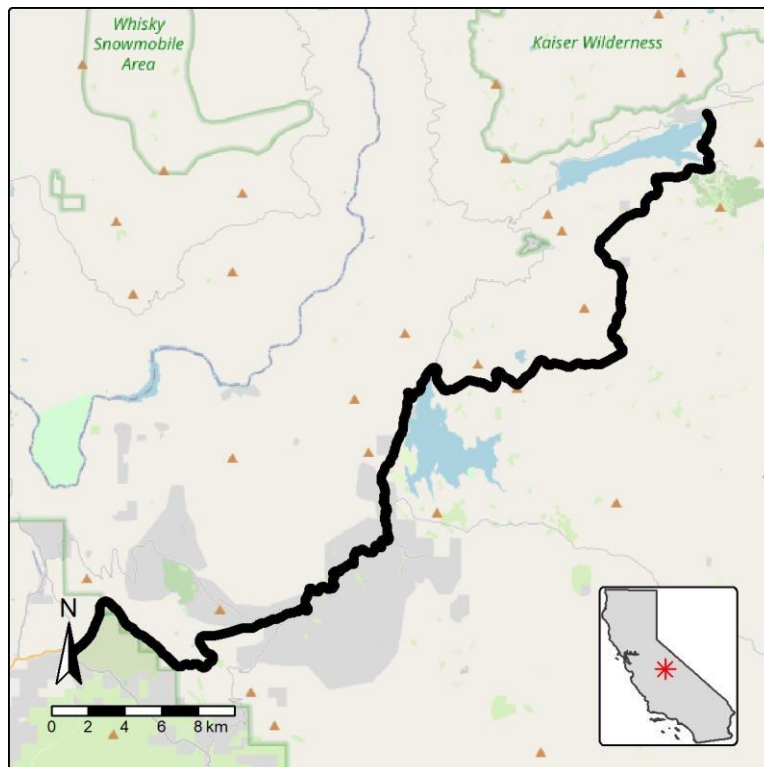


Figure: SR-168 (Shaver Lake) between Prather and Huntington Lake is a Region 4 wildlife connectivity barrier.