



**Region 5 Barrier ID: W103 (Priority Barrier).**

**Barrier Name:** Simi Hills to Santa Susanna Mountains.

**Linear Infrastructure:** SR-118.

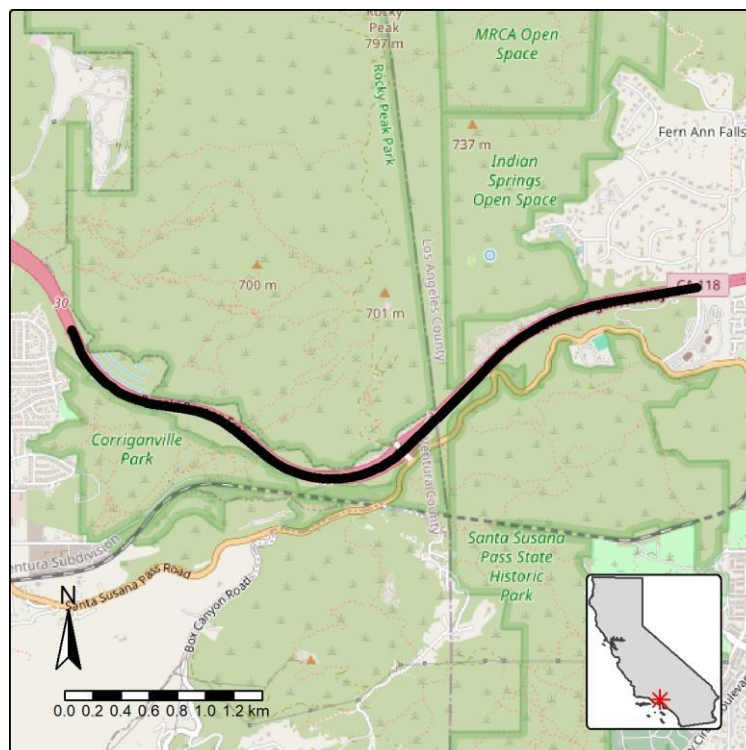
**Geographic Area:** Rocky Peak Road, east of Simi Valley, Ventura County

**Length:** 4.34 km (2.70 mi).

**Target Species:** Mountain lion (*Puma concolor*), deer (*Odocoileus hemionus*), bobcat (*Lynx rufus*), kit fox (*Vulpes macrotis*), spotted skunk (*Spilogale gracilis*), striped skunk (*Mephitis mephitis*), Virginia opossum (*Didelphis virginiana*), raccoon (*Procyon lotor*), gray fox (*Urocyon cinereoargenteus*).

**Connectivity Concerns:** State Route 118 bisects an important linkage for wildlife between the Simi Hills and the Santa Susana Mountains. With the Wallis Annenberg wildlife crossing along the 101 slated to finish construction in 2026, this would be the next north/south connection from the Santa Monica Mountains to the Santa Susana Mountains. This segment is also a well-known roadkill hotspot. State Route 118 is one of the largest obstacles affecting the movement of wildlife between the Santa Susana Mountains to the north and Wildwood Park to the south, which can serve as an area that animals use to disperse into and out of the western part of the Santa Monica Mountains (near Liberty Canyon).

**Remediation Goals:** Expand and enhance existing infrastructure such as culverts and creek bridges, add new under-crossings install wildlife exclusion fencing and secure additional lands for connectivity.



**Figure:** SR-118, east of Simi Valley at Rocky Peak Road is a Region 5 priority wildlife connectivity barrier.