



Region 5 Barrier ID: W104 (Barrier).

Barrier Name: SR-126 Santa Susanna Mountains to Los Padres.

Linear Infrastructure: SR-126.

Geographic Area: SR-126, Santa Susanna Mountains to Los Padres, just east of Ventura County/Los Angeles County line.

Length: 4.22 km (2.69 mi).

Target Species: Mountain lion (*Puma concolor*), deer (*Odocoileus hemionus*), bobcat (*Lynx rufus*), spotted skunk (*Spilogale gracilis*), striped skunk (*Mephitis mephitis*), Virginia opossum (*Didelphis virginiana*), raccoon (*Procyon lotor*), gray fox (*Urocyon cinereoargenteus*), kit fox (*Vulpes macrotis*).

Connectivity Concerns: State Route 126 runs east-west along the Santa Clara River and separates the Santa Susana Mountains from Los Padres National Forest. Connectivity is critical for wildlife populations that alter their ranges to survive. Smaller rural highways like State Route 126 where animals are more willing to attempt to cross them, increases the potential for mortality.

Remediation Goals: Currently State Route 126 has several good quality crossing points from Piru Creek east to Castaic Junction, including Piru Creek (PM VEN-28.98), Barranca Dr (PM LA -0.35), San Martinez Grande (PM LA-1.44), Chiquito Canyon (PM LA-2.50), and Castaic Creek (PM LA-4.09), but it is lacking quality crossings on the western side of the study region. The addition of a high-quality crossing point between Fillmore and Piru would be of great value for safe wildlife passage across SR-126. The simplest improvement would be to clear out debris in culverts such as Barranca Dr. and Chiquito Canyon, making them more easily passable by larger species of wildlife. Additionally, adding and maintaining natural vegetation around the culverts would encourage wildlife use. Adding wildlife fencing along the road would significantly reduce wildlife presence on the roadway. Future improvement projects should consider the addition of wildlife fencing along as much of the road as possible.

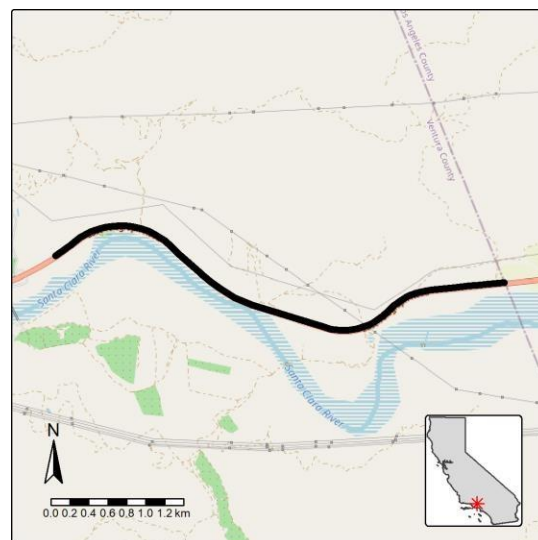


Figure: State Route 126 Santa Susanna Mountains to Los Padres is a Region 5 wildlife connectivity barrier.