



**Region 5 Barrier ID: W107 (Priority Barrier).**

**Barrier Name:** I-8 East of San Diego/El Cajon.

**Linear Infrastructure:** I-8.

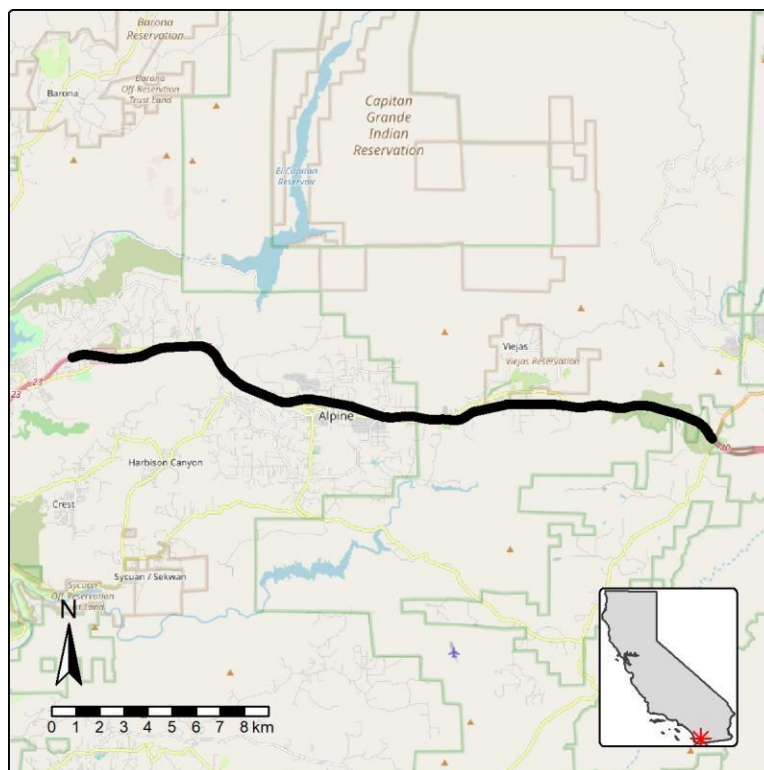
**Geographic Area:** East of San Diego and El Cajon, south of El Capitan Reservoir.

**Length:** 23.78 km (14.78 mi).

**Target Species:** Mountain lion (*Puma concolor*), deer (*Odocoileus hemionus*), California Gnatcatcher (*Poliophtila californica*).

**Connectivity Concerns:** I-8 bisects important landscape linkage between Cleveland National Forest to the south and Cuyamaca Mountain State Wilderness to the north. Mountain lion GPS collar data shows they are in the area and cross the interstate regularly. This segment is also a roadkill hotspot.

**Remediation Goals:** Expand and enhance existing infrastructure such as culverts and creek bridges, add new under-crossings and wildlife exclusion fencing.



**Figure:** I-8, east of San Diego and El Cajon, south of El Capitan Reservoir is a Region 5 priority wildlife connectivity barrier.