



**Region 5 Barrier ID: W111 (Barrier).**

**Barrier Name:** SR-78.

**Linear Infrastructure:** SR-78.

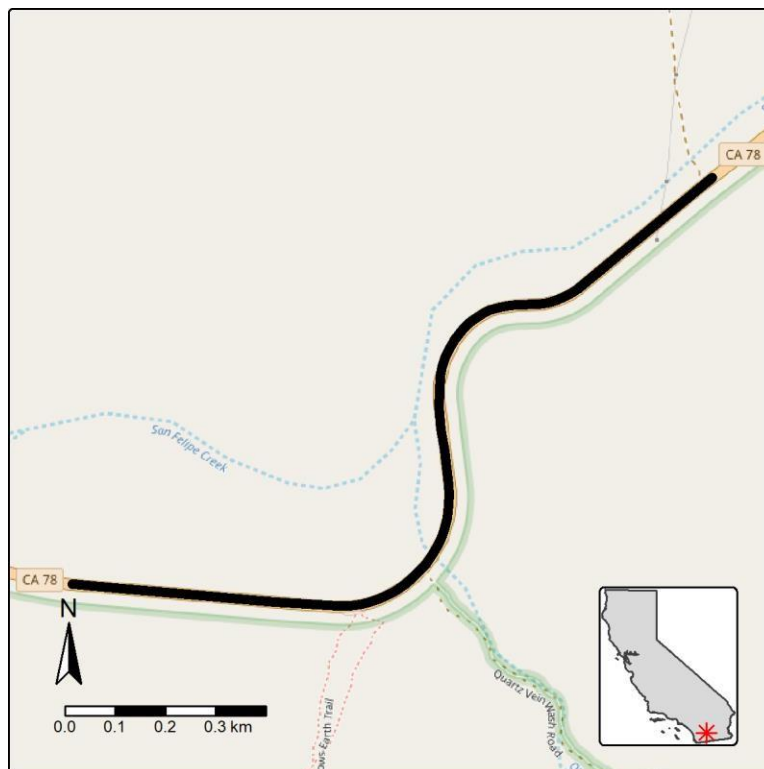
**Geographic Area:** State Route 78 between Vallecito Mountains and Yaqui Ridge along San Felipe Creek.

**Length:** 1.52 km (0.95 mi).

**Target Species:** Peninsular population of desert bighorn sheep (*Ovis canadensis nelsoni*).

**Connectivity Concerns:** State Route 78 bisects important landscape linkage between Vallecito Mountains and Yaqui Ridge for peninsular desert bighorn sheep. This is a roadkill hotspot for the sheep.

**Remediation Goals:** Find areas of highest usage/risk to wildlife. More information is needed on specific wildlife movements. Increased signage and overcrossing in this section of SR-78.



**Figure:** SR-78 between Vallecito Mountains and Yaqui Ridge is a Region 5 wildlife connectivity barrier.