



Region 5 Barrier ID: W112 (Barrier).

Barrier Name: CR-S3 Yaqui Pass.

Linear Infrastructure: CR-S3.

Geographic Area: County Road S3 between Yaqui Ridge and Pinyon Ridge through the Yaqui Pass.

Length: 5.59 km (3.47 mi).

Target Species: Peninsular population of desert bighorn sheep (*Ovis canadensis nelsoni*).

Connectivity Concerns: County Road S3 bisects important landscape linkage between Yaqui Ridge and Pinyon Ridge through the Yaqui Pass for desert bighorn sheep. This is a roadkill hotspot for the sheep.

Remediation Goals: Find areas of highest usage/risk to wildlife. More information is needed on specific wildlife movements. Increased signage and overcrossing in this section of County Road S3.

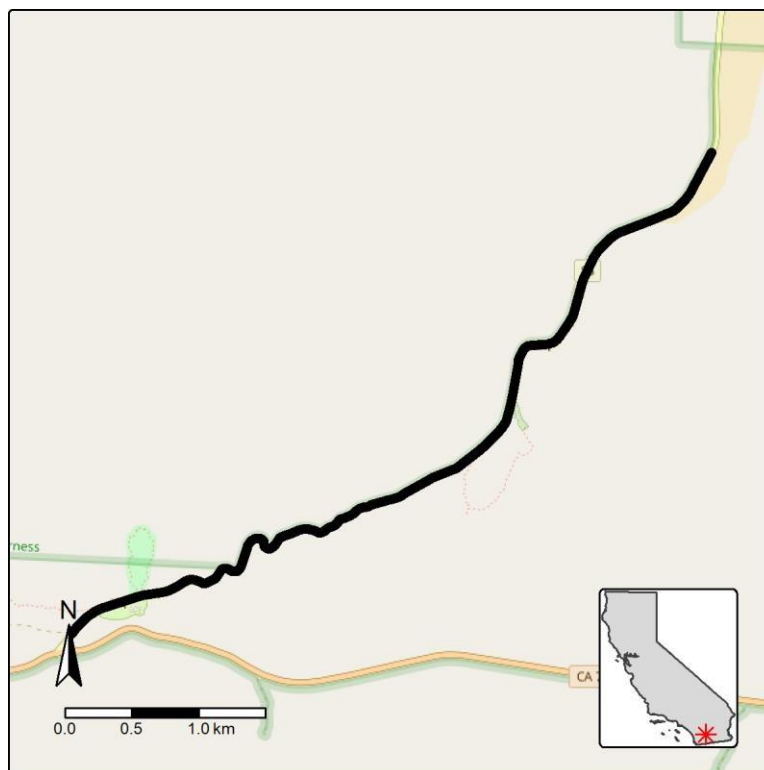


Figure: County Road S3 Yaqui Pass is a Region 5 wildlife connectivity barrier.