



Region 5 Barrier ID: W113 (Priority Barrier).

Barrier Name: SR-133 Coastal Newport Beach.

Linear Infrastructure: SR-133.

Geographic Area: East of Laguna Beach, crosses SR-73.

Length: 10.45 km (6.49 mi).

Target Species: Mountain lion (*Puma concolor*), deer (*Odocoileus hemionus*).

Connectivity Concerns: State Route 133 bisects important coastal mountain lion habitat with Laguna Coast Wilderness Park to the north and Aliso and Wood Canyon Park to the south. GPS collar data indicates a pattern of approach and refuse at this barrier location. This segment is a roadkill hotspot. There is high quality natural habitat on both sides of the barrier. Barrier removal or retrofitting would create a broad, intact linkage, patch, or core area on conserved lands. Committed partners or landowners guarantee a contiguous linkage feasible in perpetuity.

Remediation Goals: Expand and enhance existing infrastructure such as culverts and creek bridges, add new under-crossings and wildlife exclusion fencing.

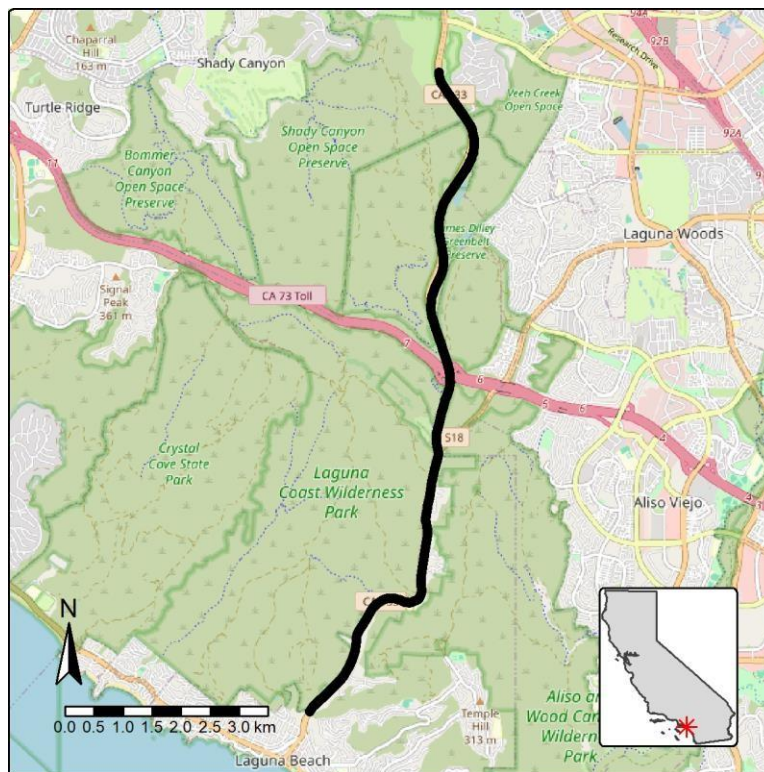


Figure: State Route 133, east of Laguna Beach is a Region 5 priority wildlife connectivity barrier.