



Region 5 Barrier ID: W114 (Barrier).

Barrier Name: Adjacent to Ballona Wetlands Ecological Reserve on Culver Boulevard, West Jefferson Boulevard

Linear Infrastructure: Culver/Jefferson Boulevards

Geographic Area: Within Ballona Wetlands Ecological Reserve in Playa Del Rey, Los Angeles County.

Length: 2.91 km (1.81 mi).

Target Species: Cottontail rabbit (*Sylvilagus spp.*), coyote (*Canis latrans*), gopher snake (*Pituophis catenifer*), kingsnake (*Lampropeltis spp.*).

Connectivity Concerns: Culver and Jefferson Blvd bisect an important ecological reserve called Ballona Wetlands. This is also a roadkill hotspot and is the only natural area surrounded by development.

Remediation Goals: Find areas of highest usage/risk to wildlife. More information is needed on specific wildlife movements. Expand and enhance existing infrastructure such as culverts and creek bridges, add new under-crossings and wildlife exclusion fencing.

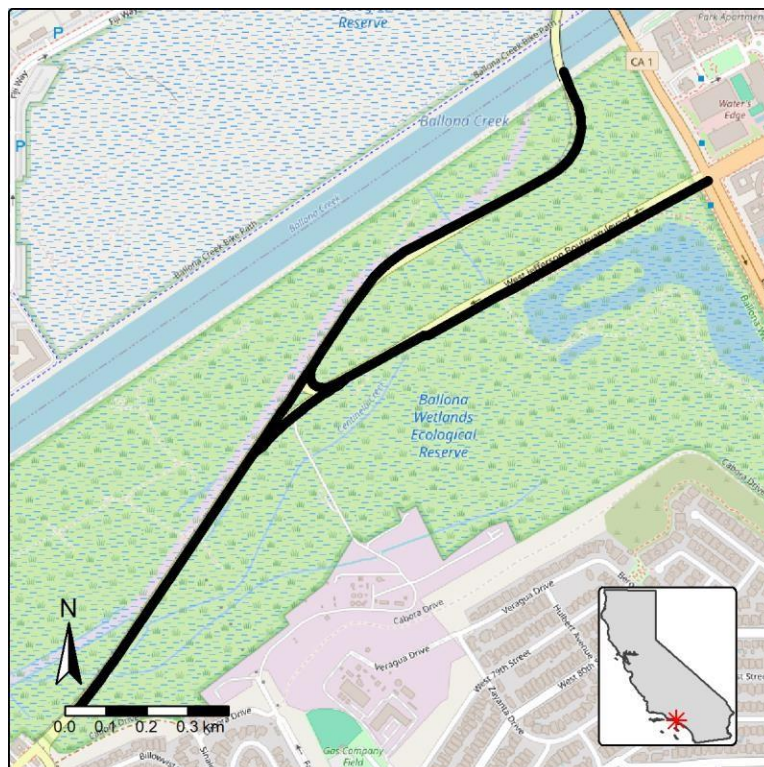


Figure: Wildlife connectivity barrier adjacent to Ballona Wetlands Ecological Reserve on Culver Boulevard and W. Jefferson Boulevard.