



Region 6 Barrier ID: W131 (Barrier).

Barrier Name: Gilman Springs Rd.

Linear Infrastructure: Gilman Springs Road.

Geographic Area: Western Riverside County, Caltrans District 8.

Length: 15.93 km (9.90 mi).

Target Species: Coyote (*Canis latrans*), badger (*Taxidea taxus*), striped skunk (*Mephitis mephitis*), spotted skunk (*Spilogale gracilis*), snake (order *Squamata*, suborder *Serpentes*), weasel (family *Mustelidae*), jackrabbit (*Lepus spp.*).

Connectivity Concerns: Along with SR-91, this separates the Badlands and the San Jacinto Mountains to the south from the Box Springs Mountains area. This is a general barrier not focused on particular taxa.

Remediation Goals: Install exclusion/directional fencing. Expand/enhance existing infrastructure such as culverts.

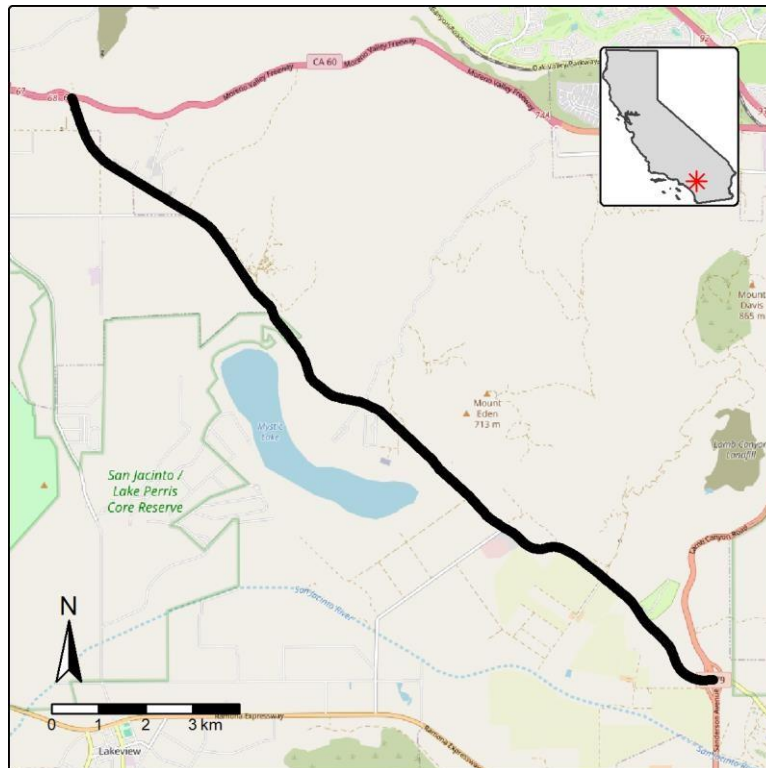


Figure: Barrier W131 along Gilman Springs Road in Riverside County.