



Region 4/Region 6 Barrier ID: W133 (Barrier).

Barrier Name: US-395 Lone Pine to Kramer Junction.

Linear Infrastructure: US-395.

Geographic Area: US-395 corridor, Inyo County, Caltrans District 9.

Length: 190.39 km (118.33 mi).

Target Species: Desert tortoise (*Gopherus agassizii*), deer (*Odocoileus hemionus*), Mohave ground squirrel (*Xerospermophilus mohavensis*).

Connectivity Concerns: Potentially important area for Desert Tortoise and Mohave Ground Squirrel.

Remediation Goals: Install exclusion/directional fencing. Expand/enhance existing infrastructure such as culverts.

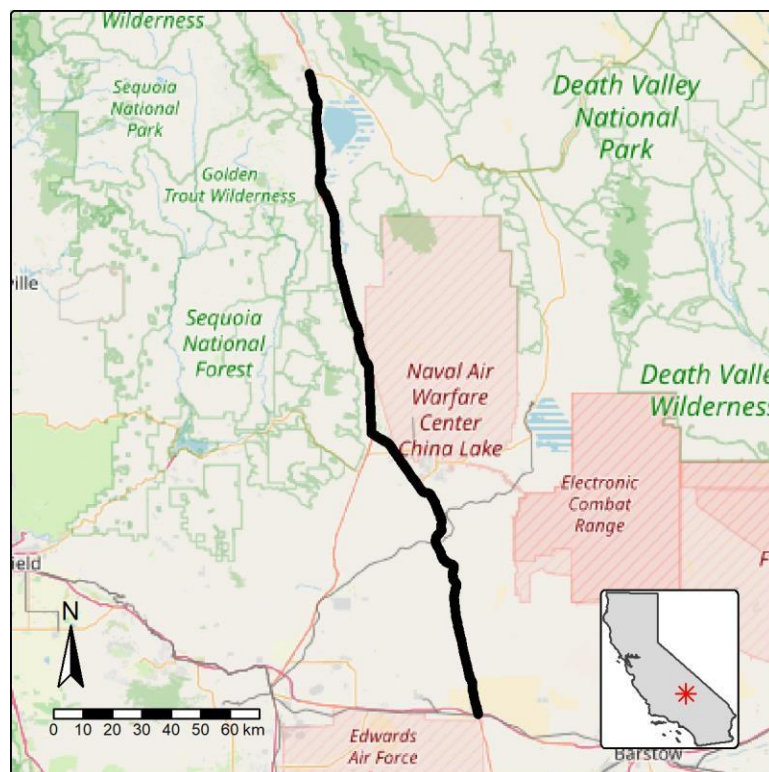


Figure: Barrier W133 along US-395 in Inyo County.