



**Region 6 Barrier ID: W134 (Barrier).**

**Barrier Name:** Los Angeles Aqueduct.

**Linear Infrastructure:** Los Angeles Aqueduct.

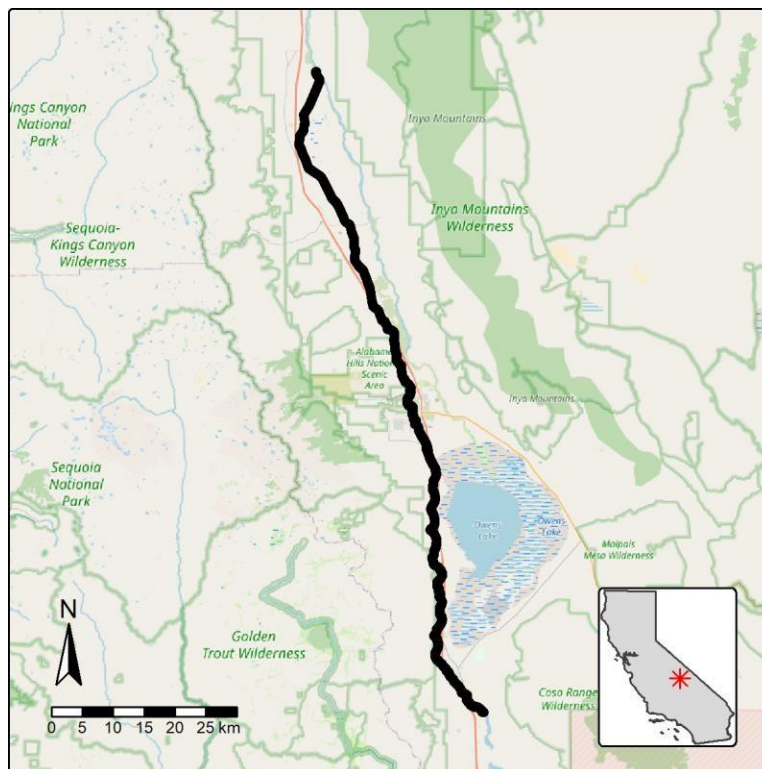
**Geographic Area:** US-395 corridor, Inyo County, Caltrans District 9.

**Length:** 98.65 km (61.31 mi).

**Target Species:** Desert tortoise (*Gopherus agassizii*), mountain lion (*Puma concolor*).

**Connectivity Concerns:** Potentially important for desert tortoise. Contributes to mountain lion mortality along US-395.

**Remediation Goals:** Additional bridges near mountain lion road strikes, possibly exclusion fencing for desert tortoise.



**Figure:** Barrier W134 along US-395 in Inyo County.