



**Region 6 Barrier ID: W135 (Remediated).**

**Barrier Name:** SR-60 through Badlands.

**Linear Infrastructure:** SR-60.

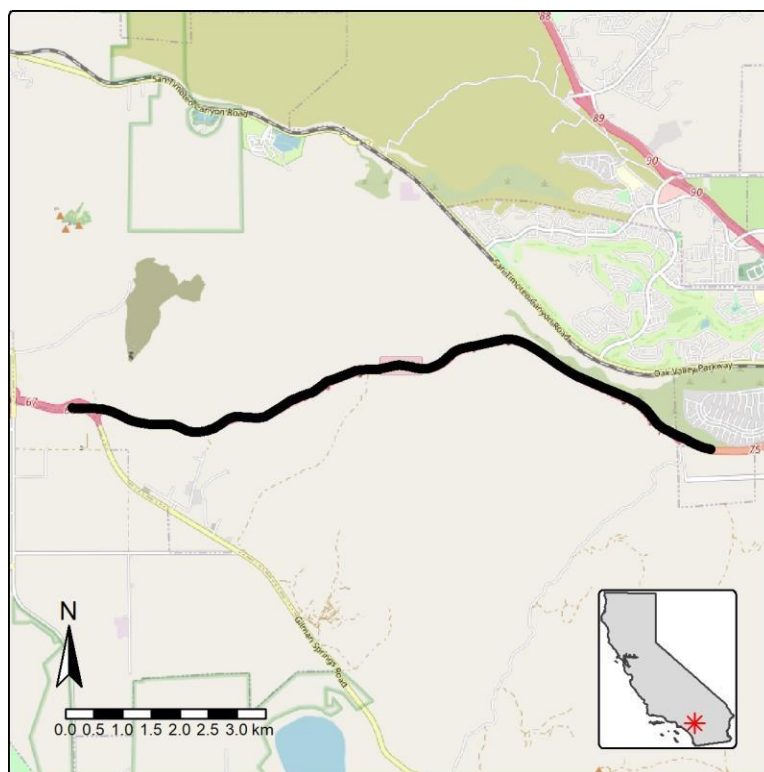
**Geographic Area:** Western Riverside, Riverside County, Caltrans District 8.

**Length:** 10.11 km (6.28 mi).

**Target Species:** Bobcat (*Lynx rufus*), coyote (*Canis latrans*), mountain lion (*Puma concolor*), deer (*Odocoileus hemionus*), badger (*Taxidea taxus*).

**Connectivity Concerns:** SR-60 impedes connectivity of the Box Springs Mountains and San Timoteo Canyon areas with the San Jacintos, thus isolating the former areas.

**Remediation Goals:** Complete. A box culvert was installed near the east end of this barrier to improve connectivity. Monitoring is ongoing.



**Figure:** Barrier W135 along SR-60 in Riverside County.