



**Region 6 Barrier ID: W136 (Barrier).**

**Barrier Name:** La Quinta/Santa Rosa Mountains/Imperial Irrigation District Canal.

**Linear Infrastructure:** La Quinta Canal.

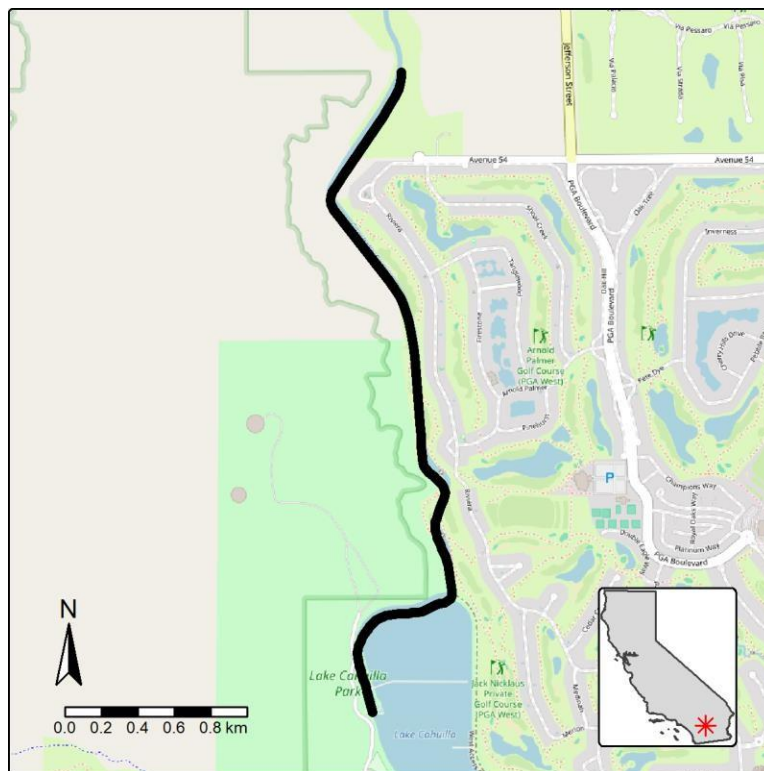
**Geographic Area:** Transverse/Peninsular Ranges, Riverside County, Caltrans District 8.

**Length:** 3.47 km (2.16 mi).

**Target Species:** Peninsular population of desert bighorn sheep (*Ovis canadensis nelsoni*).

**Connectivity Concerns:** Peninsular bighorn sheep drown in the canal.

**Remediation Goals:** Install exclusion/directional fencing. Expand/enhance existing infrastructure such as culverts.



**Figure:** Barrier W136 in Riverside County.