



Region 5/Region 6 Barrier ID: W137 (Barrier).

Barrier Name: Ortega Highway (SR-74 - entire length through).

Linear Infrastructure: SR-74.

Geographic Area: Runs from San Juan Capistrano to Lake Elsinore.

Length: 40.32 km (25.06 miles).

Target Species: Mountain lion (*Puma concolor*), deer (*Odocoileus hemionus*), bobcat (*Lynx rufus*), kitfox (*Vulpes macrotis*), mesocarnivores: skunk (*Mephitis spp.*), opossum (*Didelphis virginiana*), raccoon (*Procyon lotor*), grey fox (*Urocyon cinereoargenteus*).

Connectivity Concerns: SR-74 bisects an important linkage for wildlife within the Santa Ana Mountains within Cleveland National Forest. This section of SR-74 is a roadkill hotspot with multiple mountain lions being hit and killed over the years and movement data suggesting they cross this two-lane highway frequently.

Remediation Goals: Find areas of highest usage/risk to wildlife. Expand and enhance existing infrastructure such as culverts and creek bridges, add new undercrossings and wildlife exclusion fencing.

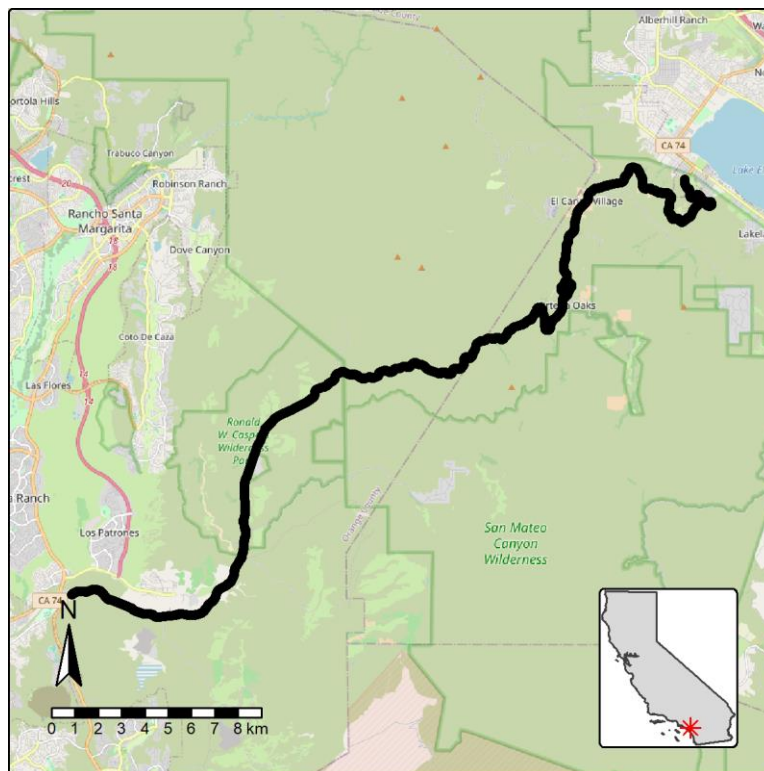


Figure: Ortega Highway (SR-74 - entire length through) is a Region 5 wildlife connectivity barrier.