



Region 6 Barrier ID: W138 (Barrier).

Barrier Name: Glen Helen at Lytle Creek.

Linear Infrastructure: Glen Helen Parkway.

Geographic Area: Transverse/Peninsular Ranges, San Bernardino County, Caltrans District 8.

Length: 0.89 km (0.55 mi).

Target Species: Los Angeles pocket mouse (*Perognathus longimembris brevinasus*), speckled dace (*Rhinichthys osculus*).

Connectivity Concerns: Dam prevents movement of Dace, also alters alluvium important for pocket mouse.

Remediation Goals: Remove and reconstruct bridge and invert without drop structure and constriction.

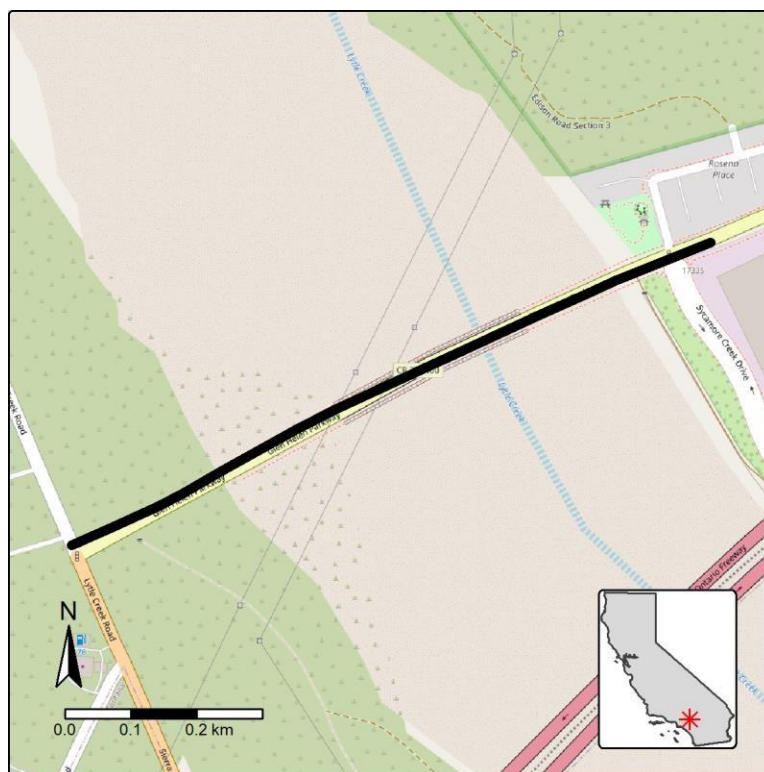


Figure: Barrier W138 along Glen Helen Parkway in San Bernardino County.