



Region 6 Barrier ID: W140 (Barrier).

Barrier Name: SR-62 through Twentynine Palms.

Linear Infrastructure: SR-62.

Geographic Area: Mojave Desert, San Bernardino County, Caltrans District 8.

Length: 17.69 km (11.00 mi).

Target Species: Mountain lion (*Puma concolor*), desert bighorn sheep (*Ovis canadensis nelsoni*).

Connectivity Concerns: Barrier between the Little San Bernardinos and the Bullion Mountains to the north.

Remediation Goals: Identify corridors through greater Twentynine Palms region, identify species that need connectivity, develop priorities based on these.

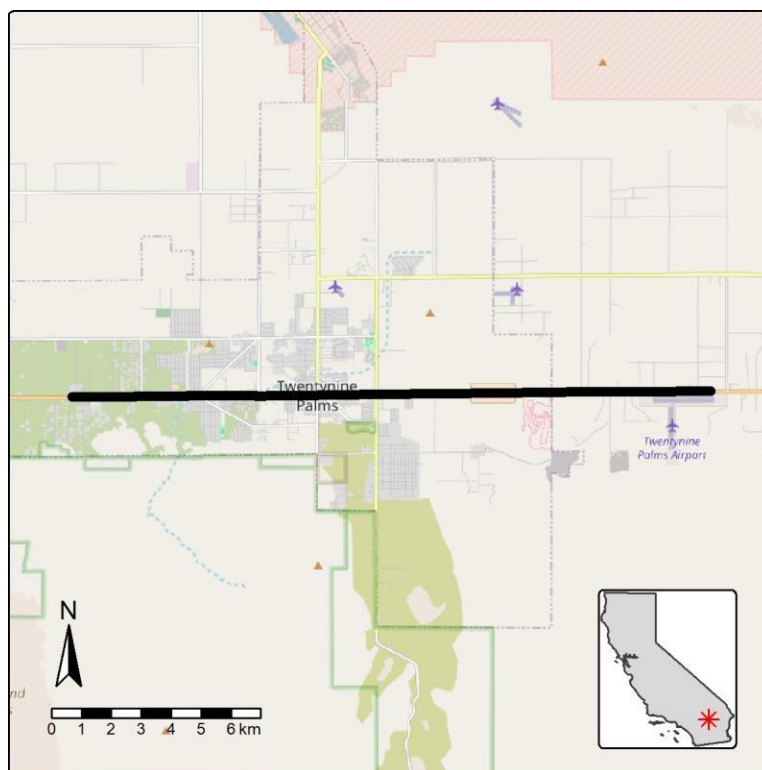


Figure: Barrier W140 along SR-62 in San Bernardino County.