



Region 6 Barrier ID: W141 (Barrier).

Barrier Name: US-395 from Mammoth to Bridgeport.

Linear Infrastructure: US-395.

Geographic Area: US-395 corridor, Mono County, Caltrans District 9.

Length: 71.61 km (44.51 mi).

Target Species: Migratory deer (*Odocoileus hemionus*), bi-state sage grouse (*Centrocercus urophasianus*), black bear (*Ursus americanus*), mountain lion (*Puma concolor*).

Connectivity Concerns: Multiple deer migration routes cross US-395, with sporadic mortalities of lion and bear also present.

Remediation Goals: Install exclusion/directional fencing. Expand/enhance existing infrastructure such as culverts.

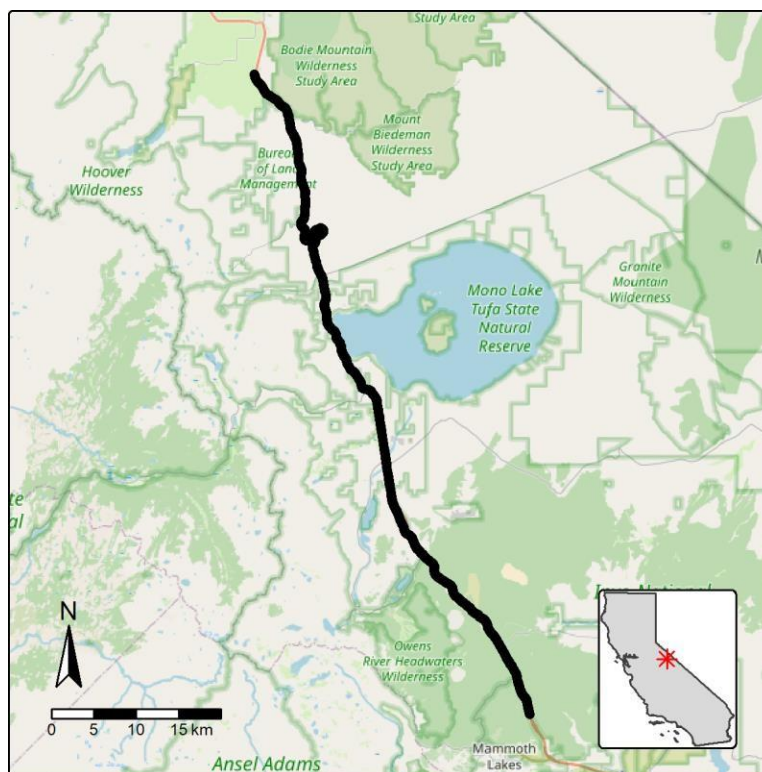


Figure: Barrier W141 along US-395 in Mono County.