



Region 6 Barrier ID: W143 (Barrier).

Barrier Name: La Cadena Drive South drop structure (SW of I-10 & I-215).

Linear Infrastructure: La Cadena Drive South drop structure.

Geographic Area: Western Riverside, San Bernardino County, Caltrans District 8.

Length: 0.27 km (0.17 mi).

Target Species: Steelhead (*Oncorhynchus mykiss*), Pacific lamprey (*Entosphenus tridentatus*), Santa Ana sucker (*Catostomus santaanae*), arroyo chub (*Gila orcuttii*).

Connectivity Concerns: Because this dam is downstream of the confluence of the Santa Ana River and Lytle Creek, it impedes fish movement along both watersheds.

Remediation Goals: No real opportunities for remediation.

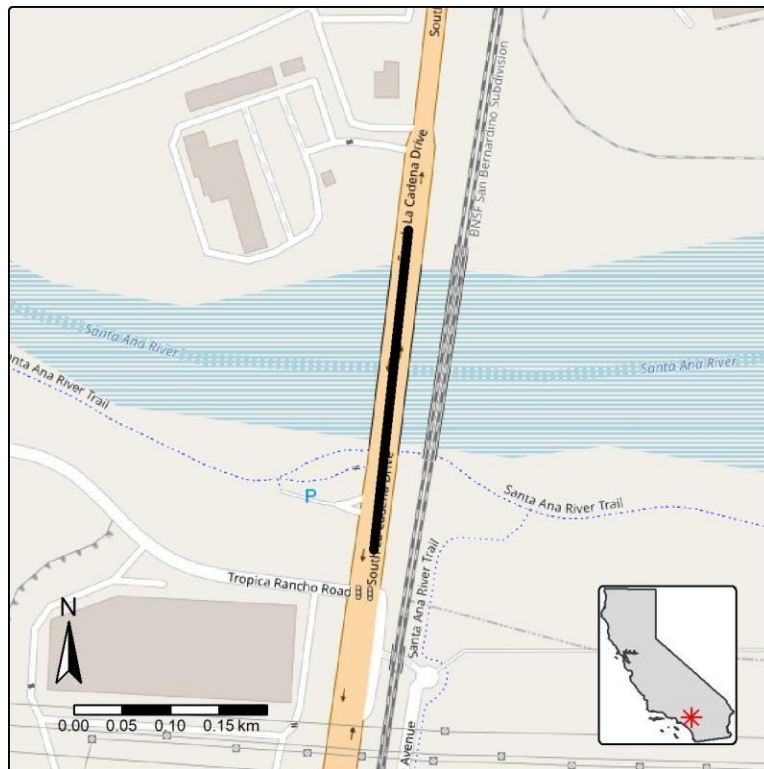


Figure: Barrier W143 along La Cadena Drive Dam in San Bernardino County.