



**Region 6 Barrier ID: W146 (Barrier).**

**Barrier Name:** U.S./Mexico Boundary Fence.

**Linear Infrastructure:** International Border Fence.

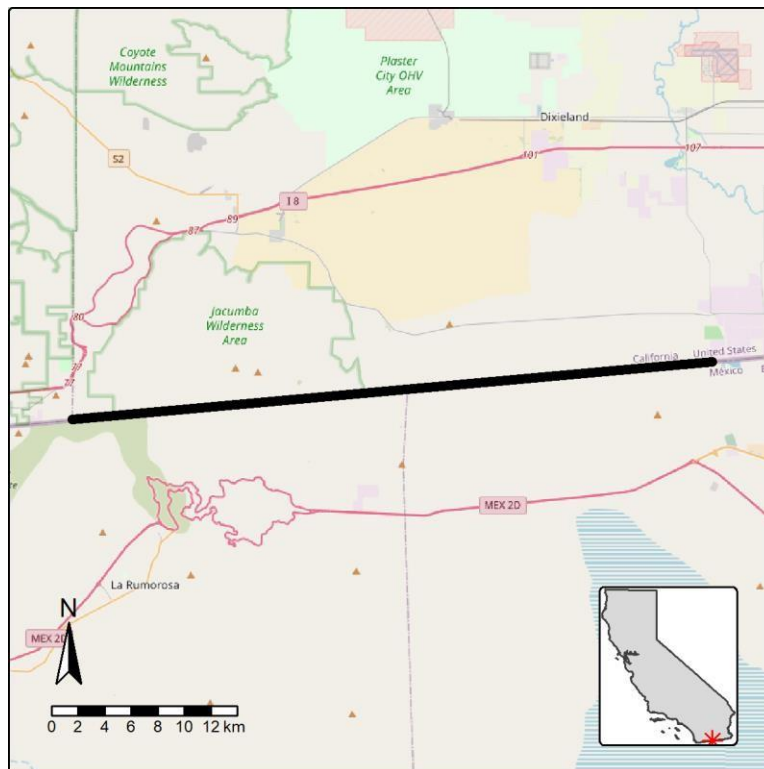
**Geographic Area:** Sonoran Desert, Imperial County, Caltrans District 11.

**Length:** 40.85 km (25.39 mi).

**Target Species:** Flat-tailed horned lizard (*Phrynosoma mcallii*), Colorado Desert fringe-toed lizard (*Uma notata*), barefoot banded gecko (*Coleonyx switaki*).

**Connectivity Concerns:** Open slat fencing across the border may impede larger bodied mammals, but not likely to impede reptiles.

**Remediation Goals:** Some portions of the border wall in Arizona have small cutouts (approx 4-6 inch pieces removed near ground level from two adjacent slats) creating holes for javelina. A similar approach could potentially be used in California if deemed necessary.



**Figure:** Barrier W146 along international border fence in Imperial County.