



Region 6 Barrier ID: W147 (Barrier).

Barrier Name: I-215/Keller Road Linkage Area.

Linear Infrastructure: I-215.

Geographic Area: Western Riverside County, Caltrans District 8.

Length: 0.82 km (0.51 mi).

Target Species: Coastal California gnatcatcher (*Poliioptila californica californica*), bobcat (*Lynx rufus*).

Connectivity Concerns: This is a site along I-215 that has appropriate habitat on either side for coastal gnatcatcher.

Remediation Goals: Recommendation is to upsize/straighten a culvert and add exclusion fencing to facilitate bobcat movement. Improving gnatcatcher connectivity would require an overcrossing.

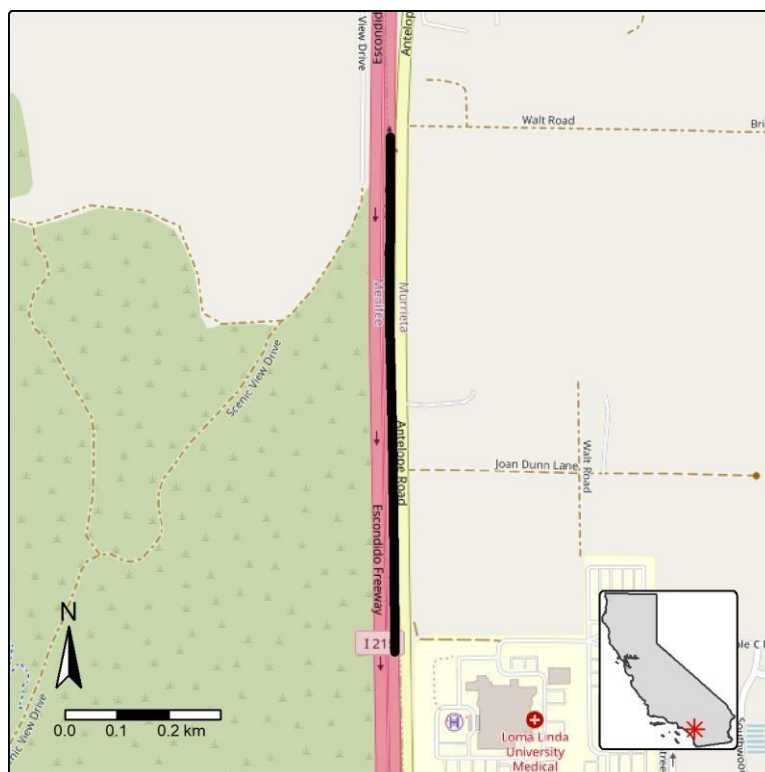


Figure: Barrier W147 along I-215 in Riverside County.