



Region 3 Barrier ID: W153 (Barrier).

Barrier Name: SR-13 between SR-24 & I-580.

Linear Infrastructure: SR-13.

Geographic Area: East of Oakland.

Length: 8.83 km (5.49 mi).

Target Species: Mountain lion (*Puma concolor*), deer (*Odocoileus hemionus*).

Connectivity Concerns: There is heavy road mortality, with open space to the East and riparian connections to urban areas to the West.

Remediation Goals: This barrier requires more study. Directional fencing may help guide wildlife to safer crossing points; however, crossing into the urban area is problematic, especially for mountain lions, so restricting connectivity may be more appropriate.

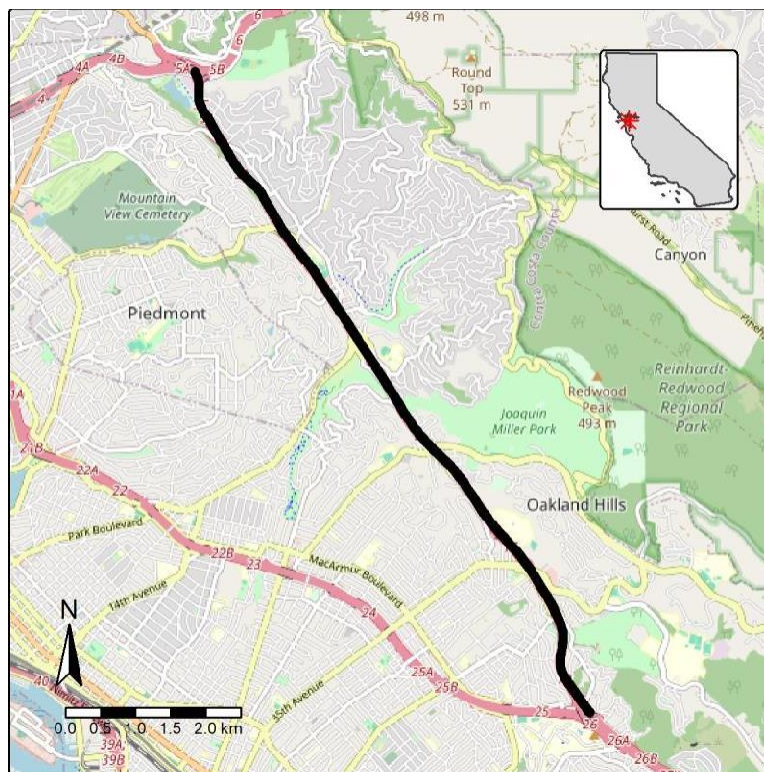


Figure: W153, SR-13 between SR-24 and I-580 East of Oakland.