



Region 3 Barrier ID: W155 (Barrier).

Barrier Name: SR-12 (Walters Rd to SR-113).

Linear Infrastructure: SR-12.

Geographic Area: Fairfield to SR-113, Solano County, North of Suisun Marsh.

Length: 25.85 km (16.06 mi).

Target Species: California tiger salamander (CTS) (*Ambystoma californiense*), other herpetofauna.

Connectivity Concerns: The road elevation and parallel roadside drainages create a barrier that is hard to traverse for amphibians.

Remediation Goals: Caltrans SR-12 pavement project may have opportunities for undercrossing enhancements. CTS movement studies, culvert, and road studies are needed before well-designed undercrossings can be planned.

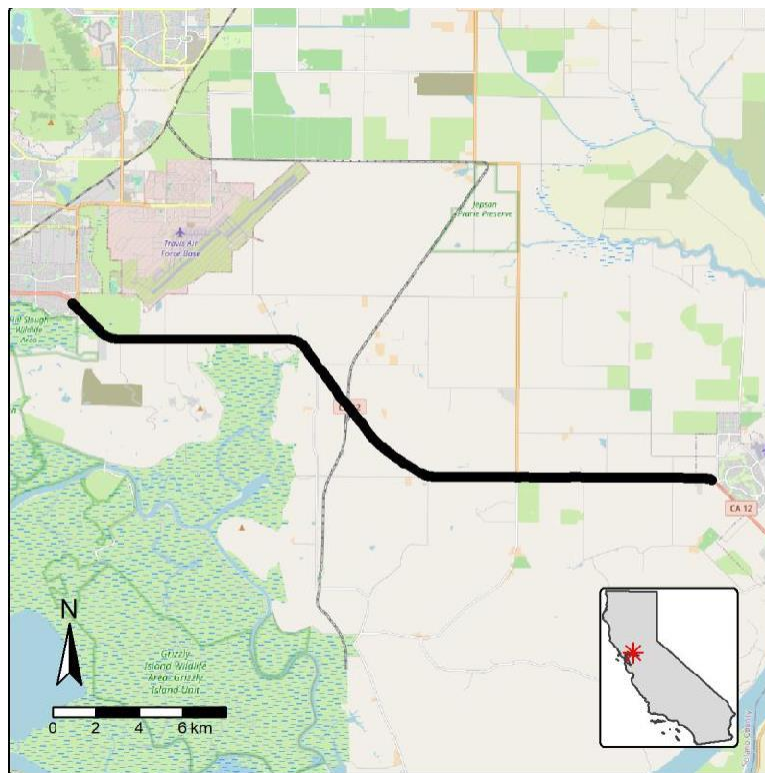


Figure: W155, SR-12 on Walters Road to SR-113 North of Suisun Marsh in Solano County.