



Region 3 Barrier ID: W156 (Barrier).

Barrier Name: SR-17 at Pasatiempo.

Linear Infrastructure: SR-17.

Geographic Area: Santa Cruz mountains near the city of Santa Cruz.

Length: 4.85 km (3.02 mi)

Target Species: Bobcat (*Lynx rufus*), coyote (*Canis latrans*), mountain lion (*Puma concolor*), deer (*Odocoileus hemionus*), wild turkey (*Meleagris gallopavo*).

Connectivity Concerns: High road mortality.

Remediation Goals: This segment requires more research to evaluate existing culverts and wildlife movement. Directional fencing maintained or retrofitted culverts, or undercrossings/overcrossings may improve connectivity.

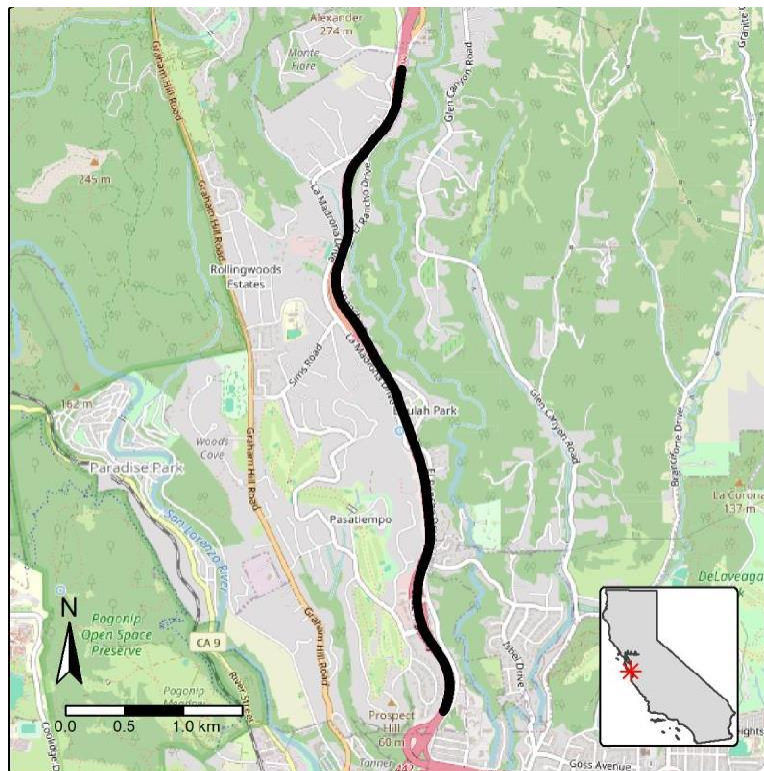


Figure: W156, SR-17 at Pasatiempo in the Santa Cruz Mountains near Santa Cruz.