



Region 3 Barrier ID: W157 (Barrier).

Barrier Name: I-280 at Edgewood Rd.

Linear Infrastructure: I-280.

Geographic Area: Near the city of Redwood City.

Length: 5.53 km (3.44 mi)

Target Species: Coyote (*Canis latrans*), mountain lion (*Puma concolor*), deer (*Odocoileus hemionus*), mesocarnivores

Connectivity Concerns: High road mortality. Radio tracked deer approached and returned or were hit. Driver mortality has also been reported here. Two underpasses are used successfully. There is little habitat on the east side so wildlife should be prevented from crossing to that side or directed to safe undercrossings.

Remediation Goals: Directional fencing to direct wildlife to safe undercrossings.

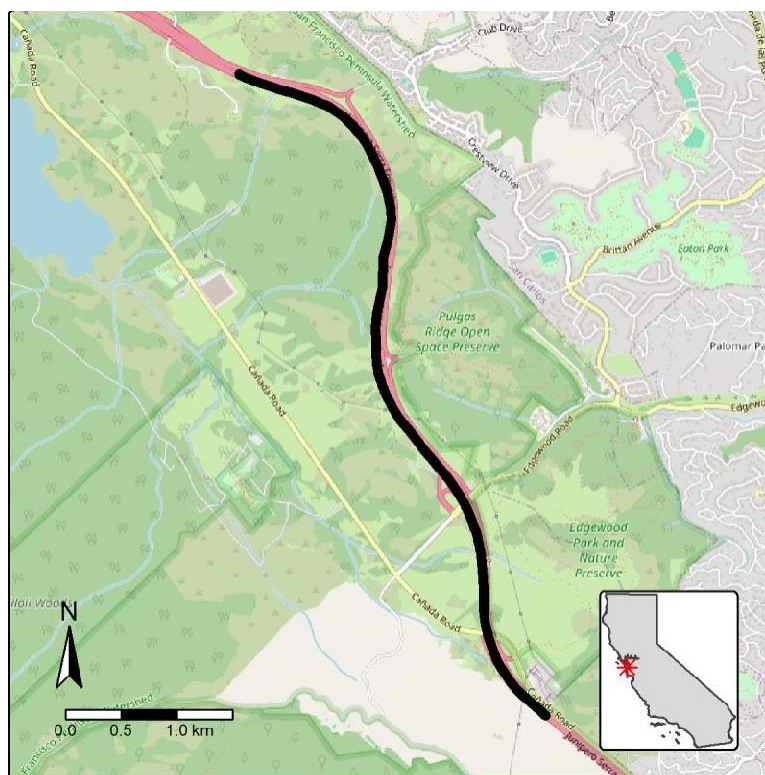


Figure: W157, I-280 on Edgewood Road near Redwood City.