



Region 3 Barrier ID: W158 (Priority Barrier).

Barrier Name: I-580 Livermore to Tracy.

Linear Infrastructure: I-580.

Geographic Area: Altamont Pass, East of the city of Livermore.

Length: 13.06 km (8.12 mi).

Target Species: California red-legged frog (*Rana draytonii*), California tiger salamander (*Ambystoma californiense*), small mammals.

Connectivity Concerns: High road mortality. This barrier bisects the Mount Diablo to Diablo Range critical linkage. A rail line is also proposed.

Remediation Goals: This barrier is part of the Restoring Connectivity for East Bay Ranges: Wildlife Overpass Planning Projects, which is assessing this barrier and other nearby highways for remediation. Suitable sites for crossings are being modeled. In this location, this may include modification of existing structures, construction of underpasses, or creation of a series of culverts.

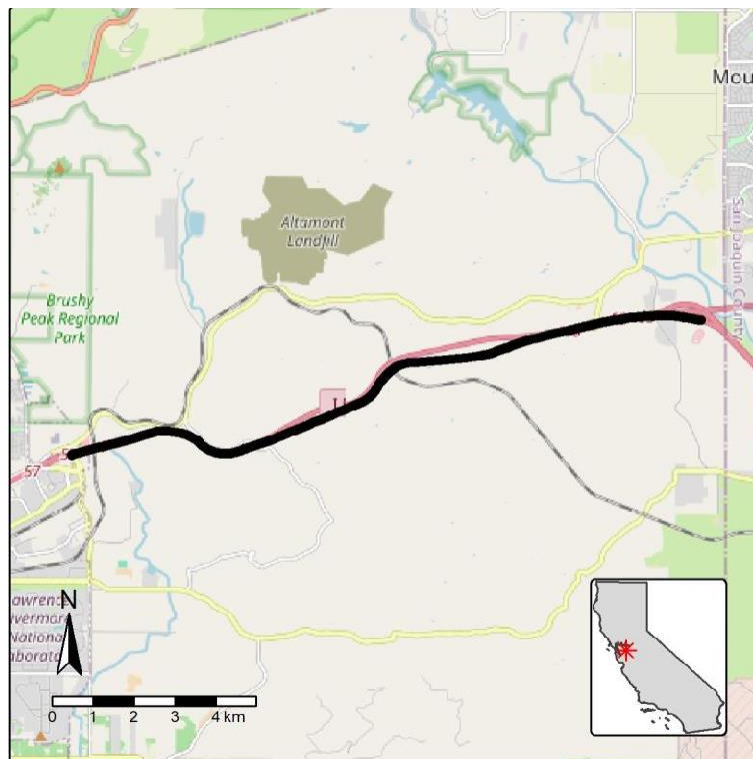


Figure: W158, I-580 in Livermore to Tracy.