



**Region 3 Barrier ID: W160 (Barrier).**

**Barrier Name:** Bailey Ave.

**Linear Infrastructure:** Bailey Avenue.

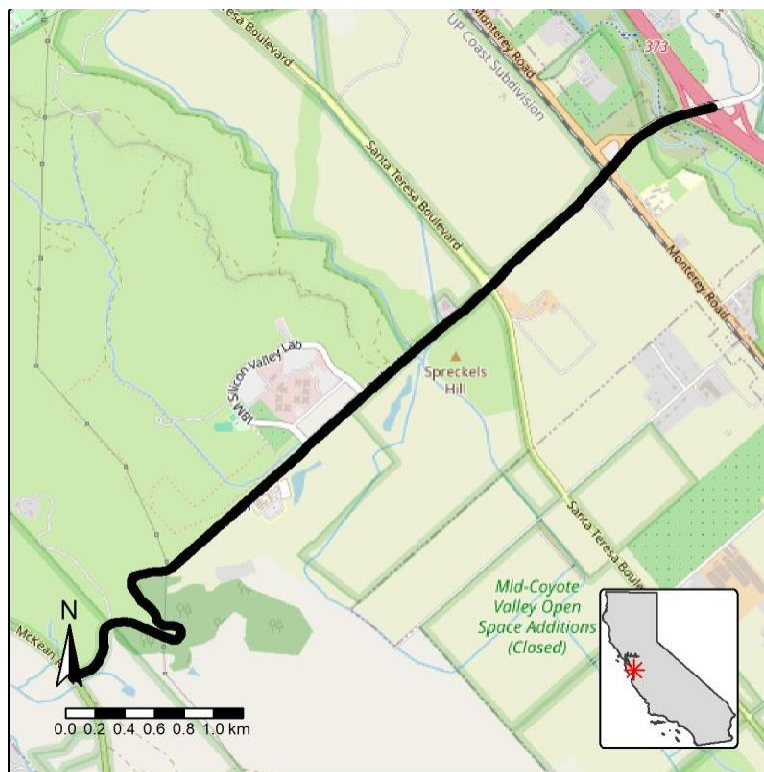
**Geographic Area:** Coyote Valley, Santa Clara County.

**Length:** 5.54 km (3.44 mi).

**Target Species:** American badger (*Taxidea taxus*), bobcat (*Lynx rufus*), coyote (*Canis latrans*), gray fox (*Urocyon cinereoargenteus*), mountain lion (*Puma concolor*), deer (*Odocoileus hemionus*).

**Connectivity Concerns:** This is one of five barriers in Coyote Valley that have been extensively studied. Coyote Valley narrowly connects the Diablo Range with the Santa Cruz Mountains. There are preserved natural areas on both sides of the valley. The main concern is high road mortality as wildlife attempts to access these areas.

**Remediation Goals:** A Wildlife Connectivity Branch Grant provides the funding for Coyote Valley Wildlife Connectivity Planning, which is assessing the current infrastructure and developing plans for undercrossings, overcrossings, directional fencing, and/or existing infrastructure improvements. Goals are to identify, plan, fund, and build these crossings and to improve existing infrastructure.



**Figure:** W160, Bailey Avenue in Coyote Valley in Santa Clara County.