



Region 4 Barrier ID: W162 (Barrier).

Barrier Name: US-101 "Bottleneck" / Prunedale split off.

Linear Infrastructure: SR-156.

Geographic Area: US-101 to San Juan Bautista.

Length: 3.32 km (2.06 mi).

Target Species: Badger (*Taxidea taxus*), bobcat (*Lynx rufus*), black bear (*Ursus americanus*), California red-legged frog (*Rana draytonii*), California tiger salamander (*Ambystoma californiense*), mountain lion (*Puma concolor*), deer (*Odocoileus hemionus*).

Connectivity Concerns: SR-156 bisects an important landscape linkage between the Santa Cruz Mountains, the Gabilans Range, and the Flint Hills. Remote camera data, roadkill data, and mountain lion GPS collar data show that this is an important linkage.

Remediation Goals: Expand and enhance existing infrastructure such as culverts and creek bridges, add new under-crossings and wildlife exclusion fencing.

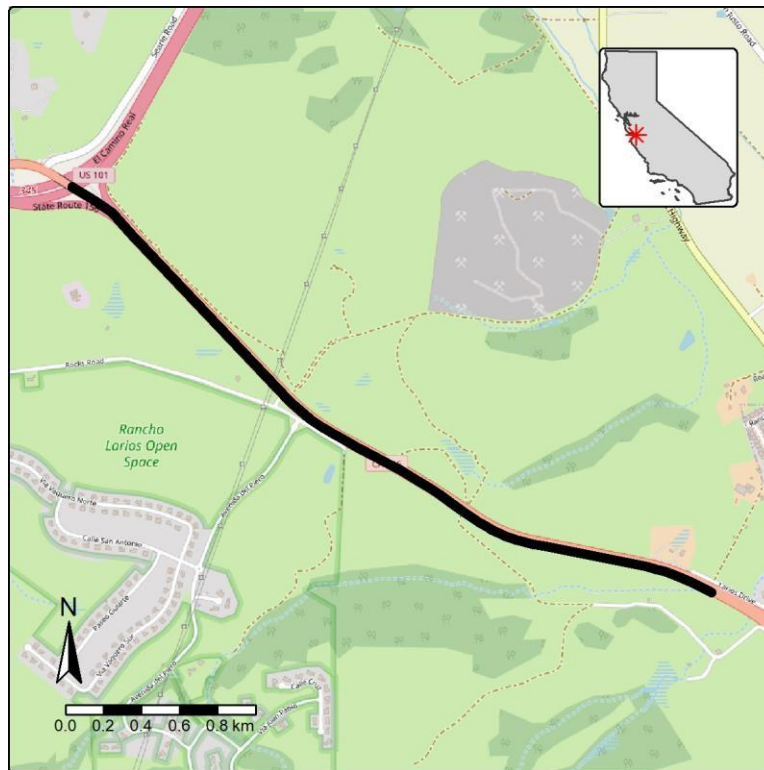


Figure: SR-156 (San Juan) between US-101 and San Juan Bautista is a Region 4 wildlife connectivity barrier.