



Region 5 Barrier ID: W164 (Barrier).

Barrier Name: Antelope Valley Freeway.

Linear Infrastructure: SR-14.

Geographic Area: East of Santa Clarita, connects to Palmdale north of Magic Mountain Wilderness Area.

Length: 49.25 km (30.61 mi).

Target Species: Mountain lion (*Puma concolor*), deer (*Odocoileus hemionus*), bobcat (*Lynx rufus*), kit fox (*Vulpes macrotis*), striped skunk (*Mephitis mephitis*), spotted skunk (*Spilogale gracilis*), Virginia opossum (*Didelphis virginiana*), raccoon (*Procyon lotor*), gray fox (*Urocyon cinereoargenteus*).

Connectivity Concerns: State Route 14 bisects an important linkage for wildlife between the Castaic Ranges and the San Gabriels within two large sections of Angeles National Forest. This linkage is imminently threatened by high density urban development spreading eastward from the city of Santa Clarita, with massive new developments proposed frequently. A major transportation route is also proposed in the linkage planning area that would create an enormous barrier to wildlife movement. The California High-Speed Rail Authority has proposed a 200-mph bullet train that would connect major cities throughout the state. This section of SR-14 is a roadkill hotspot with multiple mountain lions being hit and killed over the years.

Remediation Goals: CDFW recommends a new bridge/undercrossing 400 meters east of the existing underpass at Stonecrest Road and redirecting the main channel of Spring Canyon under this new bridge/undercrossing, so that Spring Canyon would join Bee Canyon just south of State Route 14 near the Santa Clara River. The new bridge/undercrossing would replace a section of fill slope along the low ridge between lower Spring and Bee Canyons. There are also potential crossing locations that could be enhanced at Los Piñetos (existing undercrossing), Bealle's Cut North (new overcrossing), Bealle's Cut South (new overcrossing) and Sierra over/undercrossing. We also recommend the enhancement of the vegetation underneath and approaching the bridge/undercrossings, including Agua Dulce Canyon.

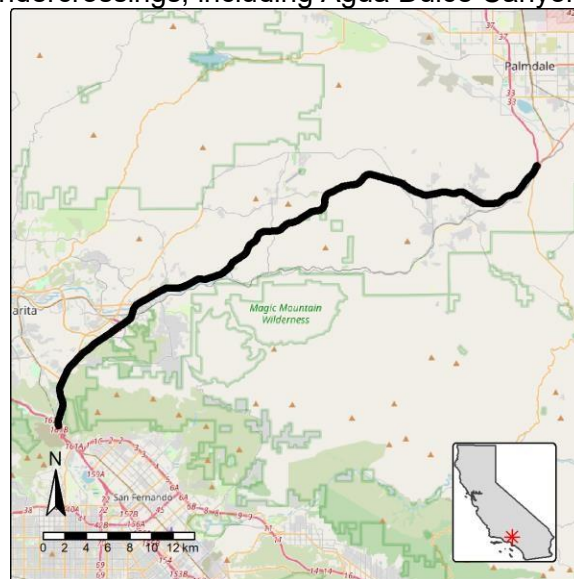


Figure: State Route 14 is a Region 5 wildlife connectivity barrier.