



Region 6 Barrier ID: W166 (Top Priority Barrier).

Barrier Name: Brightline/Cave Mountain, Soda Mountain, Clark Mountain

Linear Infrastructure: I-15.

Geographic Area: Mojave Desert, San Bernardino County, Caltrans District 8.

Length: 235.69 km (146.48 mi).

Target Species: Desert bighorn sheep (*Ovis canadensis nelsoni*), mountain lion (*Puma concolor*), desert tortoise (*Gopherus agassizii*), Mohave ground squirrel (*Xerospermophilus mohavensis*), mesocarnivores.

Connectivity Concerns: I-15 is an important and nearly complete barrier to dispersal of desert bighorn sheep, which do not use existing undercrossings along the interstate. The construction of the Brightline train is expected to only decrease permeability along this barrier.

Remediation Goals: Three wildlife overcrossings and associated exclusion fencing are currently planned that will span the new railway and the existing interstate freeway. Post-installation monitoring, including permanent video cameras and deployment of GPS collars on bighorn sheep, is being planned. Project completion, originally slated for summer 2028, is now expected by the end of 2028.

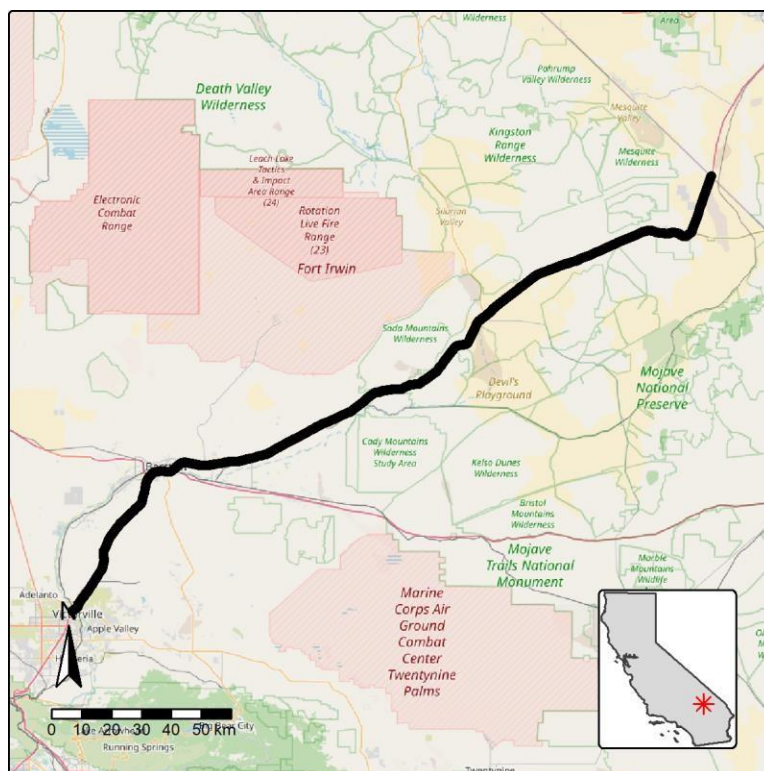


Figure: Barrier W166, along I-15 in San Bernardino County.