



Region 1 Barrier ID: W168 (Barrier).

Barrier Name: SR-89 Between SR-36 and SR-44.

Linear Infrastructure: SR-89.

Geographic Area: Shasta/Tehama County, SR-89.

Length: 55.14 km (34.27 mi).

Target Species: Sierra Nevada red fox (*Vulpes vulpes necator*), Cascades frog (*Rana cascadae*), hoary bat (*Lasiurus cinereus*), North American porcupine (*Erethizon dorsatum*), Southern long-toed salamander (*Ambystoma macrodactylum*), fringed myotis (*Myotis thysanodes*), Western bumblebee (*Bombus occidentalis*), fisher (*Pekania pennanti*), long-eared myotis (*Myotis evotis*), Yuma myotis (*Myotis yumanensis*), silver-haired bat (*Lasionycteris noctivagans*), gray-headed pika (*Ochotona princeps*), Sierra marten (*Martes caurina sierra*), Sierra Nevada Mountain beaver (*Aplodontia rufa*), black-backed woodpecker (*Picoides arcticus*), American goshawk (*Accipiter gentilis*), mesocarnivores.

Connectivity Concerns: The barrier significantly disrupts (>50%) a linkage identified in a species movement study, regional connectivity study, or Conceptual Area Protection Plan, or significantly disrupts connectivity between or within important habitat blocks. It impacts an ungulate migration corridor. Connectivity at this location is identified as essential to the recovery of a listed species or recent data (within past 5 years) shows barrier impacts to high priority species (e.g., documented mortality of sensitive species at barrier).

Remediation Goals: Remediation goals include expanding and enhancing existing infrastructure such as culverts and creek bridges, overpass, and wildlife exclusion fencing.

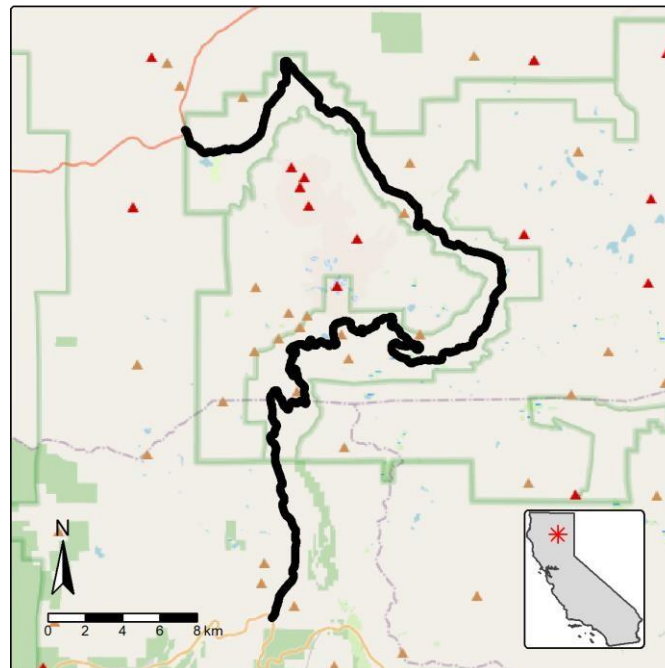


Figure: Barrier W168, SR-89 between SR-36 and SR-44.