



Region 1 Barrier ID: W171 (Barrier).

Barrier Name: North of Willits Bypass.

Linear Infrastructure: US-101.

Geographic Area: Mendocino County, US-101.

Length: 2.75 km (1.71 mi).

Target Species: Deer (*Odocoileus hemionus*), elk (*Cervus canadensis*), mesocarnivores.

Connectivity Concerns: The barrier partially intersects (<50%) a linkage identified in a species movement study, regional connectivity study, or Conceptual Area Protection Plan, or inhibits connectivity between or within important habitat blocks. The barrier also affects important movement corridors for sensitive or high-priority species, as identified in species movement studies, population viability analyses, or genetic studies. Expert knowledge or data indicates wildlife mortality of two or more species, but population-level impacts not expected.

Remediation Goals: Crossing structure, modify existing culverts, add fence and jump outs with connectivity component.

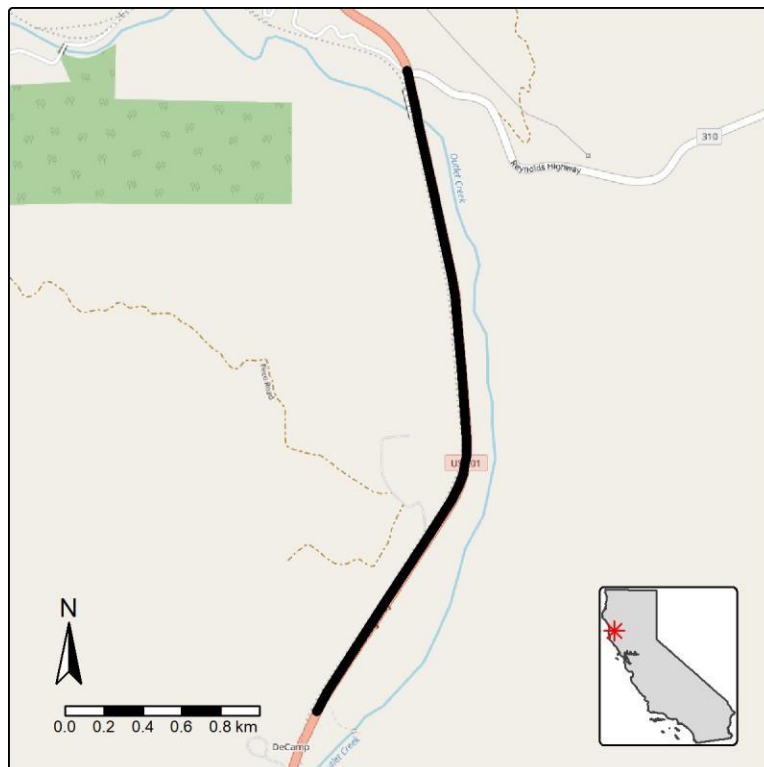


Figure: Barrier W171, North of Willits Bypass on US-101.