



**Region 1 Barrier ID: W172 (Barrier).**

**Barrier Name:** Crescent City to Oregon Border.

**Linear Infrastructure:** US-199.

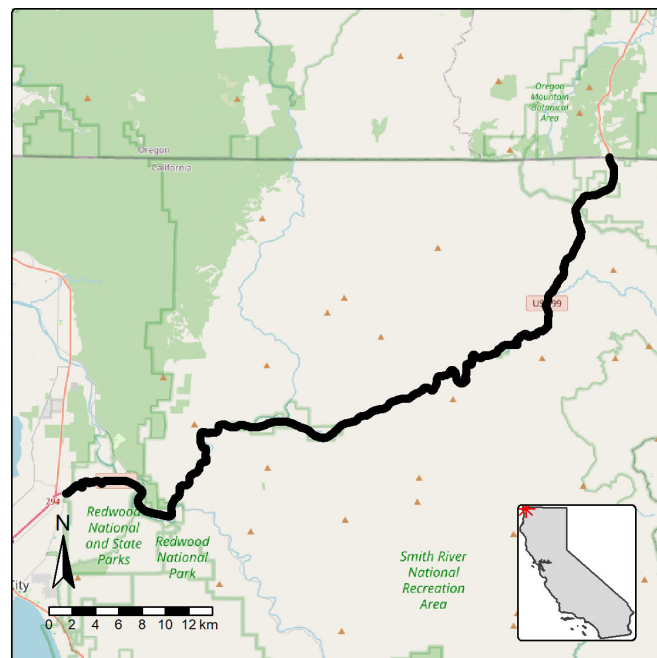
**Geographic Area:** Del Norte County, US-199.

**Length:** 58.13 km (36.13 mi).

**Target Species:** Humboldt marten (*Martes caurina humboldtensis*), deer (*Odocoileus hemionus*), black bear (*Ursus americanus*), Northern red-legged frog (*Rana aurora*), Del Norte salamander (*Plethodon elongatus*), Western pond turtle (*Actinemys marmorata*), foothill yellow-legged frog (*Rana boylei*), Pacific tailed frog (*Ascaphus truei*), Southern torrent salamander (*Rhyacotriton variegatus*), mesocarnivores.

**Connectivity Concerns:** The barrier significantly disrupts (>50%) a linkage identified in a species movement study, regional connectivity study, or Conceptual Area Protection Plan, or significantly disrupts connectivity between or within important habitat blocks. It affects high-priority ungulate migration corridors (e.g., Secretary Order 3362 priority areas) or bisects such corridors. Recent data (within the past 5 years) document the barrier's impact, such as roadkill. Connectivity at this location is identified as essential to the recovery of a listed species or recent data (within past 5 years) shows barrier impacts to high priority species (e.g., documented mortality of sensitive species at barrier). Expert knowledge or data indicates wildlife mortality of two or more species, but population-level impacts not expected.

**Remediation Goals:** Crossing structure, modify existing culverts, add fencing and jump-outs.



**Figure:** Barrier W172, Crescent City to Oregon Border on US-199.