



Region 1 Barrier ID: W174 (Barrier).

Barrier Name: West of Willow Creek.

Linear Infrastructure: SR-299.

Geographic Area: Humboldt county, SR-299.

Length: 12.04 km (7.48 mi).

Target Species: Mountain lion (*Puma concolor*), Humboldt marten (*Martes caurina humboldtensis*), mesocarnivores.

Connectivity Concerns: The barrier completely disrupts a linkage identified in a species movement study, regional connectivity study, or Conceptual Area Protection Plan, or prevents movement between or within important habitat blocks. The barrier also affects important movement corridors for sensitive or high-priority species, as identified in species movement studies, population viability analyses, or genetic studies.

Remediation Goals: Crossing structure, modify existing culverts, add fence and jump outs with connectivity component.

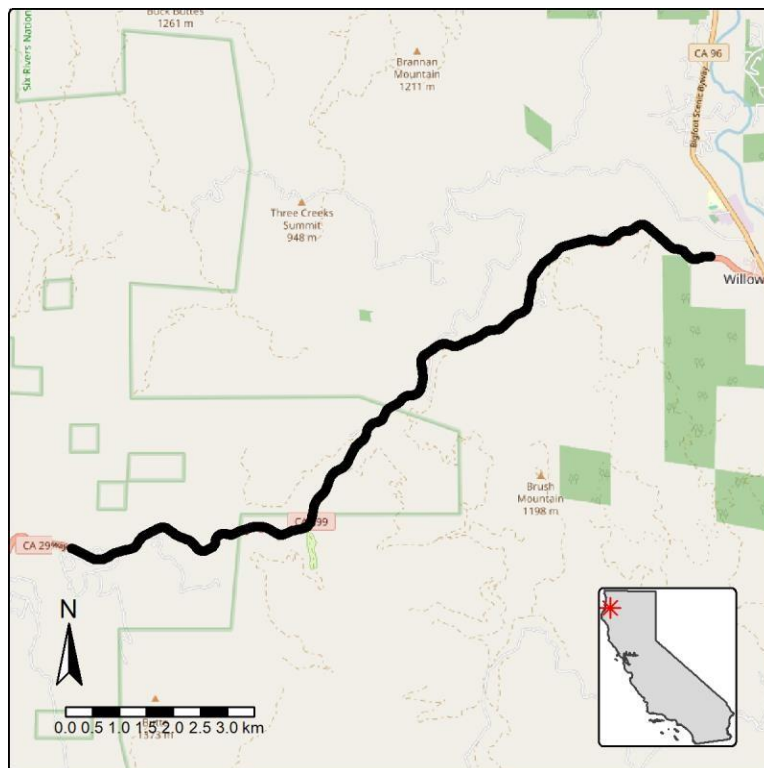


Figure: Barrier W174, West of Willow Creek on SR-299.