



Region 1 Barrier ID: W175 (Priority Barrier).

Barrier Name: I-5/SR-89 – Edgewood.

Linear Infrastructure: I-5.

Geographic Area: Siskiyou county, Mount Shasta to Edgewood, I-5.

Length: 23.16 km (14.39 mi).

Target Species: Mountain lion (*Puma concolor*), deer (*Odocoileus hemionus*), black bear (*Ursus americanus*), wolf (*Canis lupus*), bobcat (*Lynx rufus*), mesocarnivores.

Connectivity Concerns: The barrier significantly disrupts (>50%) a linkage identified in a species movement study, regional connectivity study, or Conceptual Area Protection Plan, or significantly disrupts connectivity between or within important habitat blocks. It impacts an ungulate migration corridor. The barrier also affects important movement corridors for sensitive or high-priority species, as identified in species movement studies, population viability analyses, or genetic studies. Data shows roadkill hotspots, significant or consistent wildlife mortality events, or mortality that could lead to population-level impacts for one or more species.

Remediation Goals: Crossings improved, constructed, fencing and improved fencing, traffic laws.

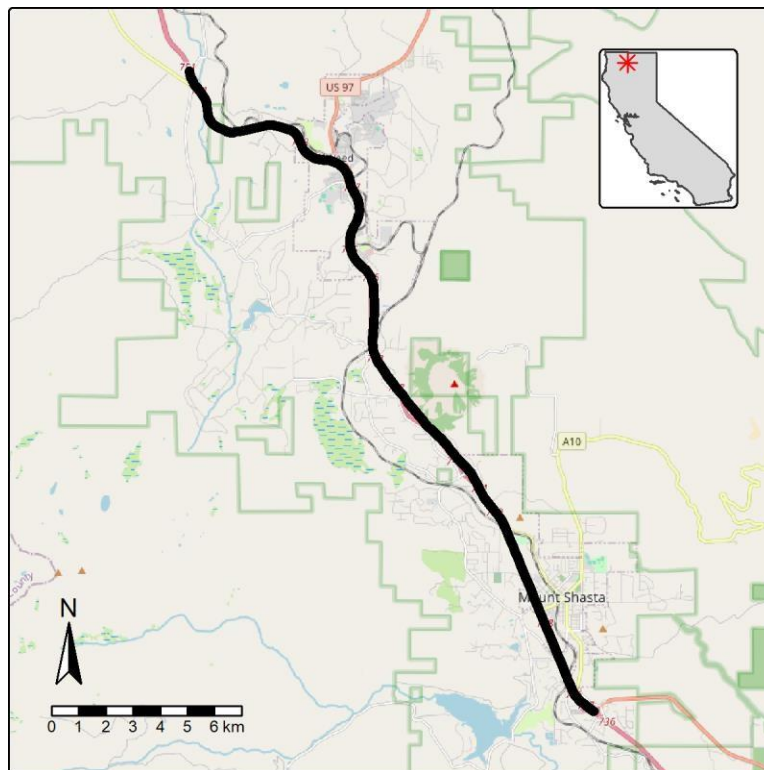


Figure: Barrier W175, I-5/SR-89 - Edgewood.