



Region 2 Barrier ID: W180 (Barrier).

Barrier Name: SR-32 Big Chico Creek Ecological Reserve (BCCER), Forest Ranch.

Linear Infrastructure: SR-32.

Geographic Area: Butte County, SR-32 from BCCER to Lomo.

Length: 13.54 km (8.42 mi).

Target Species: Deer (*Odocoileus hemionus*), mountain lion (*Puma concolor*), black bear (*Ursus americanus*), small mammals.

Connectivity Concerns: This stretch of SR-32 sees animal vehicle collision as resident wildlife and deer from the Bucks Mountain/Mooretown herd make daily or seasonal movements. BCCER has documented wildlife presence, there are long stretches with no place to go under the highway.

Remediation Goals: Expand and enhance existing infrastructure such as culverts and creek/river bridges, add new wildlife crossing structures and wildlife exclusion fencing.

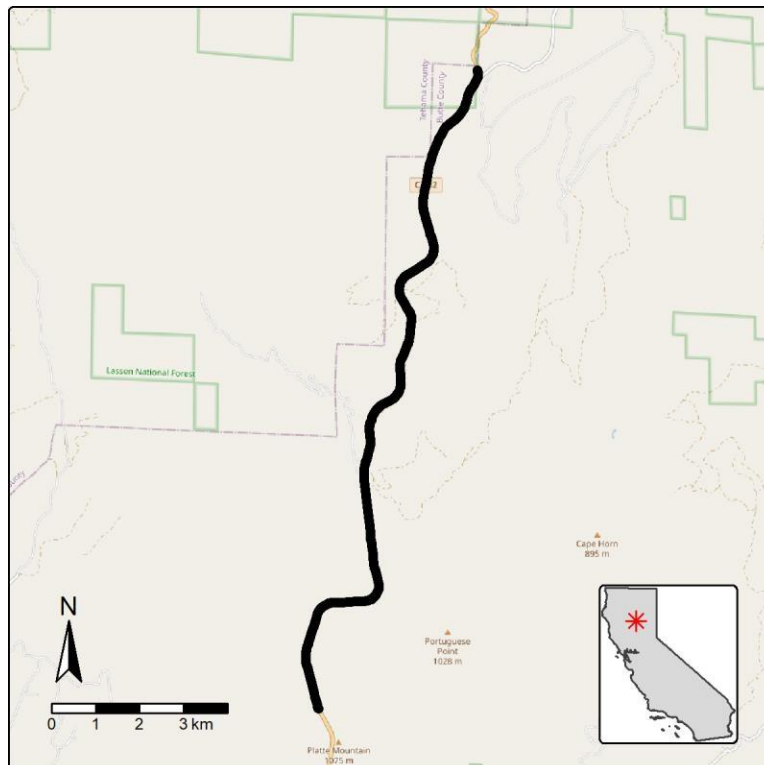


Figure: SR-32 from BCCER to Lomo is a Region 2 wildlife connectivity barrier.