



**Region 2 Barrier ID: W184 (Priority Barrier).**

**Barrier Name:** US-50 Crest of the Sierra.

**Linear Infrastructure:** US-50.

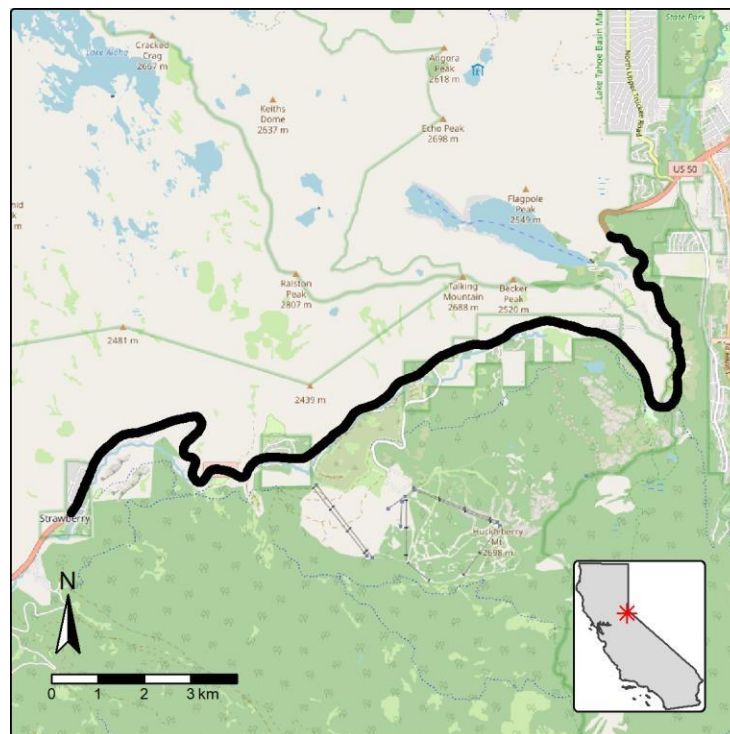
**Geographic Area:** El Dorado County, US-50 at the crest of the Sierra Nevada Mountain Range.

**Length:** 18.02 km (11.20 mi).

**Target Species:** Mountain lion (*Puma concolor*), black bear (*Ursus americanus*), gray wolf (*Canis lupus*), deer (*Odocoileus hemionus*), Rocky Mountain elk (*Cervus canadensis nelsoni*), small mammals.

**Connectivity Concerns:** This stretch of US 50 has restricted movement due to traffic volume but sits at a peak elevation that is important for climate refugia and bisects the Sierra Nevada Mountain Range restricting north-south movement. The highway is a linear boundary between the Pacific and Grizzly Flat migratory deer herds. Fence is difficult to build due to snow load.

**Remediation Goals:** Expand and enhance existing infrastructure such as culverts and creek/river bridges, add new wildlife crossing structures and wildlife exclusion fencing.



**Figure:** US-50 at the crest of the Sierra Nevada Mountain Range is a Region 2 priority wildlife connectivity barrier.