



Region 2 Barrier ID: W186 (Barrier).

Barrier Name: SR-4 Crest of the Sierra.

Linear Infrastructure: SR-4.

Geographic Area: Alpine County, SR-4 at the crest of the Sierra Nevada Mountain Range.

Length: 4.82 km (3.00 mi).

Target Species: Mountain lion (*Puma concolor*), black bear (*Ursus americanus*), gray wolf (*Canis lupus*), deer (*Odocoileus hemionus*), Rocky Mountain elk (*Cervus canadensis nelsoni*), small mammals.

Connectivity Concerns: This stretch of SR-4 is seeing increased traffic volume and sits at a peak elevation that is important for climate refugia and bisects the Sierra Nevada Mountain Range restricting north-south movement. The highway is a linear boundary between the Salt Springs and Railroad Flat migratory deer herds and includes interstate migratory deer in the Carson River deer herd. Fence is difficult to build due to snow load.

Remediation Goals: Expand and enhance existing infrastructure such as culverts and creek/river bridges, add new wildlife crossing structures and wildlife exclusion fencing.

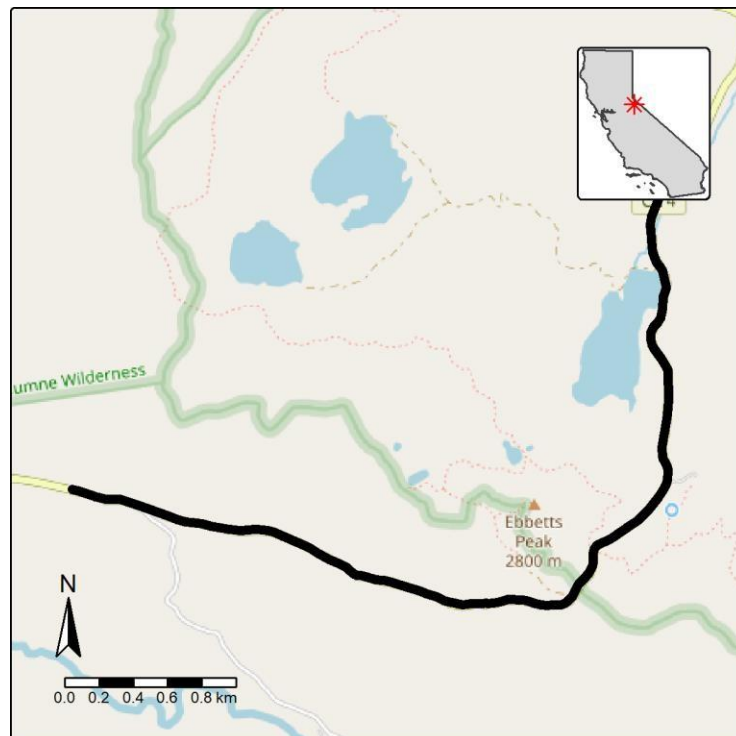


Figure: SR-4 at the crest of the Sierra Nevada Mountain Range is a Region 2 wildlife connectivity barrier.