



Region 2 Barrier ID: W188 (Barrier).

Barrier Name: SR-49 Pedro Hill.

Linear Infrastructure: SR-49.

Geographic Area: El Dorado County, SR-49 from Pedro Hill South to Coloma.

Length: 9.95 km (6.19 mi).

Target Species: Deer (*Odocoileus hemionus*), mountain lion (*Puma concolor*), bobcat (*Lynx rufus*), and black bear (*Ursus americanus*).

Connectivity Concerns: This stretch of SR-49 along the South Fork of the American River has high observed animal vehicle collision and presence of wildlife on the highway. Resident deer in the Motherlode herd and migratory deer from the Pacific deer herd cross the highway to meet daily and seasonal needs. Wildlife cross to use the riparian corridor and there are few options to get under the highway.

Remediation Goals: Expand and enhance existing infrastructure such as culverts and creek/river bridges, add new wildlife crossing structures and wildlife exclusion fencing.

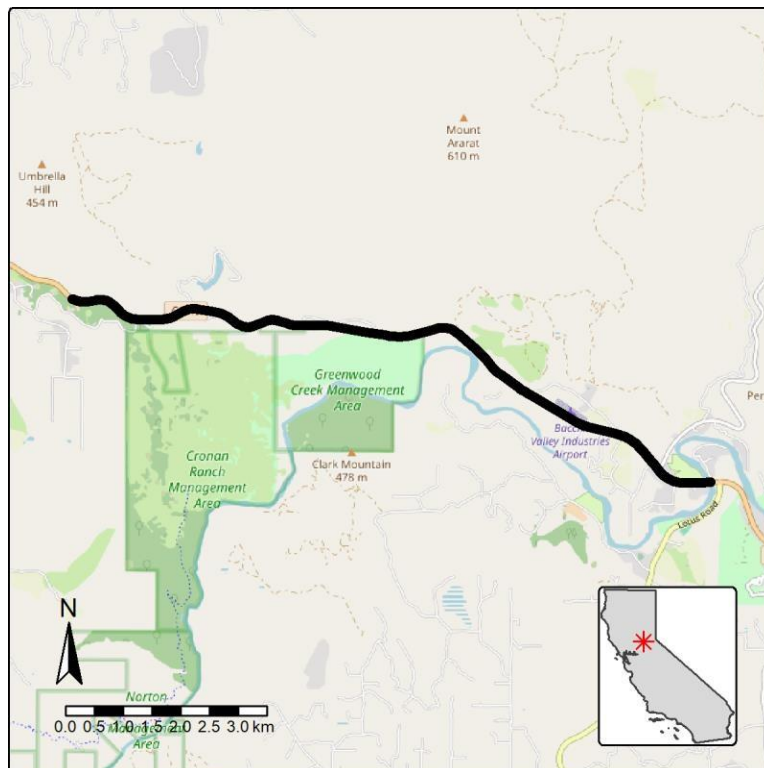


Figure: SR-49 from Pedro Hill to Coloma is a Region 2 wildlife connectivity barrier.