



Region 2 Barrier ID: W193 (Barrier).

Barrier Name: US-50 from Carson Rd to Pollock Pines.

Linear Infrastructure: US-50.

Geographic Area: El Dorado County, US-50 from the intersection with Carson Road to Pollock Pines.

Length: 8.15 km (5.06 mi).

Target Species: Mountain lion (*Puma concolor*), deer (*Odocoileus hemionus*), black bear (*Ursus americanus*), and small mammals.

Connectivity Concerns: This stretch of US-50 has observed animal vehicle collision and presence of wildlife on the highway. The highway is a linear boundary between the migratory Pacific and Grizzly Flat deer herds. The collisions are higher during the fall rut. Wildlife is present and there are limited options to get across the highway in this stretch. The tall median barrier from the Camino Safety Project makes it more difficult, and the recreational and seasonal activity at Apple Hill increases the risk.

Remediation Goals: Expand and enhance existing infrastructure such as culverts and creek/river bridges, add new wildlife crossing structures and wildlife exclusion fencing.

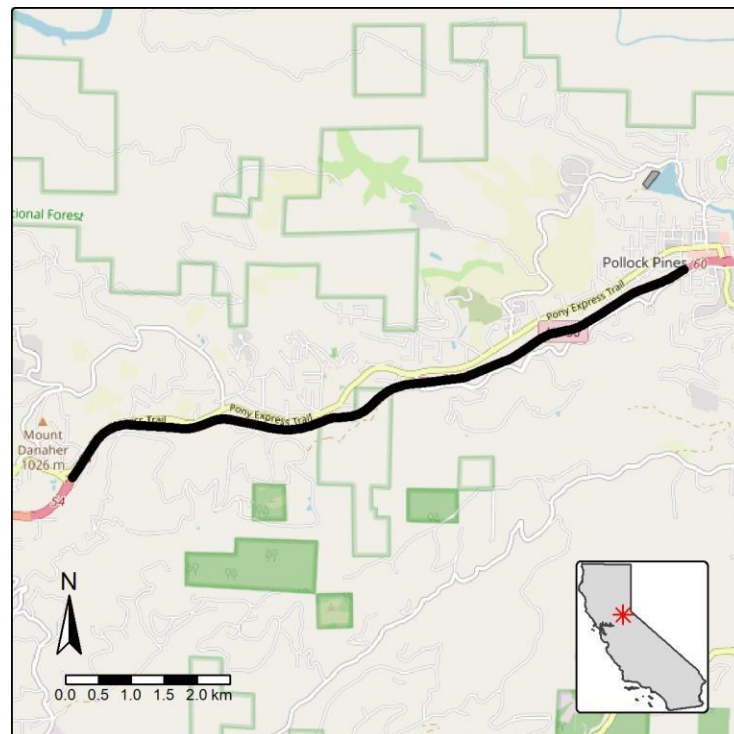


Figure: US-50 from the intersection with Carson Road to Pollock Pines is a Region 2 wildlife connectivity barrier.