



Region 3 Barrier ID: W194 (Barrier).

Barrier Name: SR-152 new segment--San Felipe Lake.

Linear Infrastructure: SR-152.

Geographic Area: San Felipe Lake, South of the city of San Jose.

Length: 8.93 km (5.55 mi).

Target Species: American badger (*Taxidea taxus*), bobcat (*Lynx rufus*), California red-legged frog (*Rana draytonii*), California tiger salamander (*Ambystoma californiense*), tule elk (*Cervus canadensis nannodes*), mountain lion (*Puma concolor*), deer (*Odocoileus hemionus*).

Connectivity Concerns: High roadkill area and badger roadkill hotspot. This barrier bisects two Bay Area Critical Linkages: Santa Cruz Mountains-Gabilan Range and Santa Cruz Mountains-Diablo Range.

Remediation Goals: Studies have identified three existing undercrossings that should be maintained and/or improved for connectivity. Additional crossings may be needed.

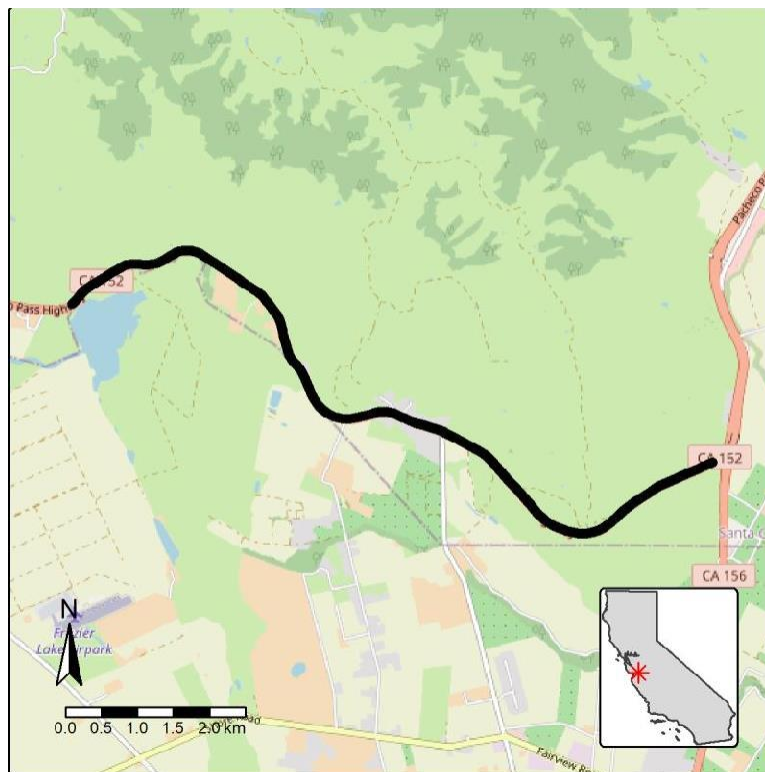


Figure: W194, SR-152 by San Felipe Lake.