



Region 3 Barrier ID: W195 (Barrier).

Barrier Name: Monterey Rd.

Linear Infrastructure: Monterey Road.

Geographic Area: Coyote Valley, Santa Clara County.

Length: 10.43 km (6.49 mi).

Target Species: American badger (*Taxidea taxus*), bobcat (*Lynx rufus*), coyote (*Canis latrans*), gray fox (*Urocyon cinereoargenteus*), mountain lion (*Puma concolor*), deer (*Odocoileus hemionus*).

Connectivity Concerns: This is one of five barriers in Coyote Valley that have been extensively studied. Coyote Valley narrowly connects the Diablo Range with the Santa Cruz Mountains. There are preserved natural areas on both sides of the valley. The main concern is high road mortality as wildlife attempts to access these areas. Monterey Road also has a problematic median barrier.

Remediation Goals: Three structures are proposed at Tulare Swale, Fisher Creek, and Tulare Meadows.

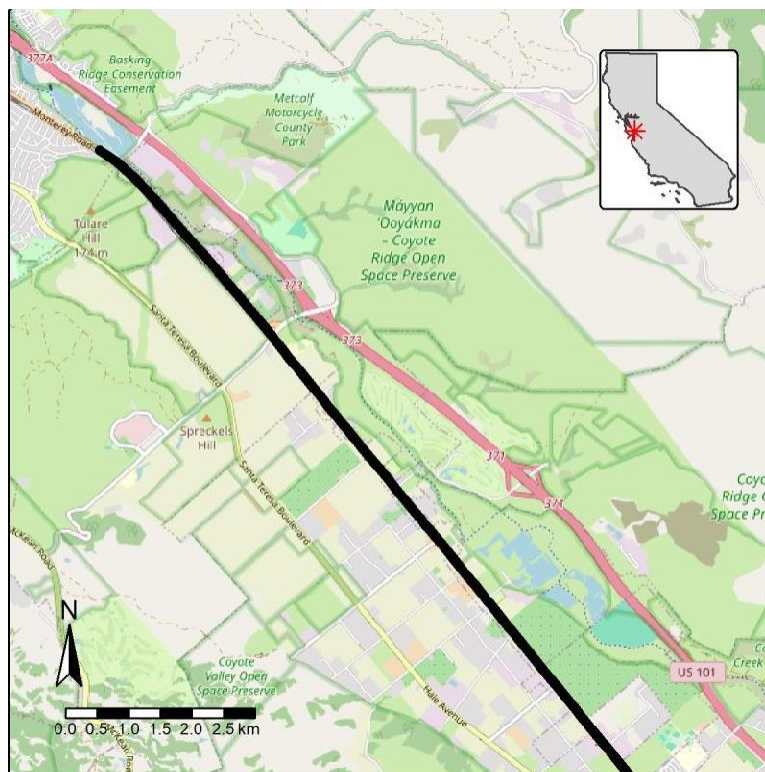


Figure: W195, Monterey Road in Coyote Valley in Santa Clara County.