



**Region 3 Barrier ID: W196 (Barrier).**

**Barrier Name:** US-101-Horn-Hunter.

**Linear Infrastructure:** US-101.

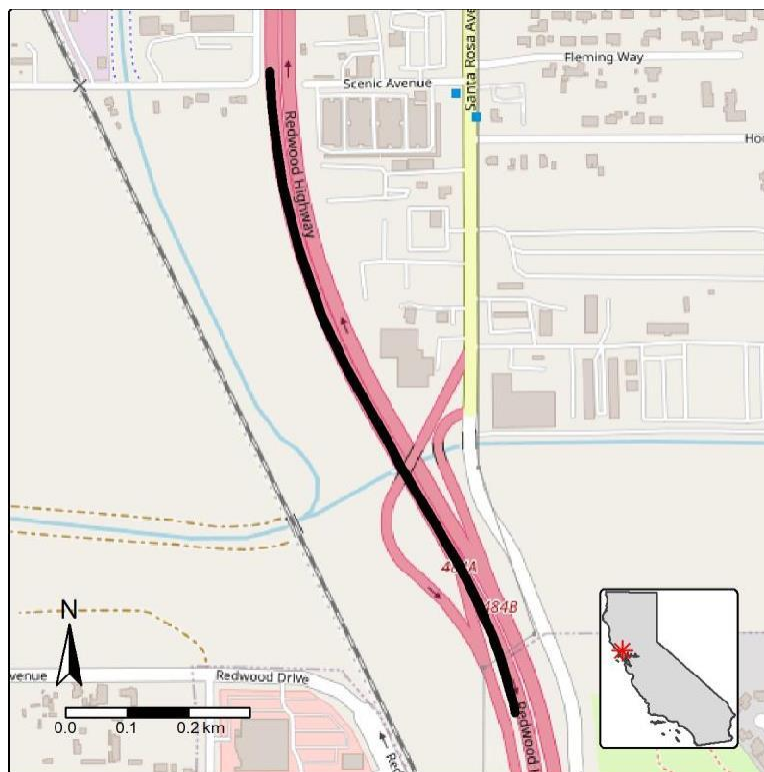
**Geographic Area:** South of the city of Santa Rosa.

**Length:** 0.88 km (0.50 mi).

**Target Species:** California tiger salamander (CTS) (*Ambystoma californiense*).

**Connectivity Concerns:** This barrier separates the Horn-Hunter CTS Management Area. Both sides of the barrier are in CTS-Sonoma Critical Habitat.

**Remediation Goals:** The Bellevue-Wildfred Flood Control Channel has a culvert under US-101 that may be expanded and/or repurposed to create better passage for CTS, but the locations and feasibility of connecting habitat need to be studied further.



**Figure:** W196, US-101 South of Santa Rosa.