



Region 3 Barrier ID: W199 (Barrier).

Barrier Name: I-680 Suisun Marsh.

Linear Infrastructure: I-680.

Geographic Area: Gold Hill Road to Lake Herman Road.

Length: 11.41 km (7.09 mi).

Target Species: Potentially California red-legged frog (*Rana draytonii*), small-medium sized mammals, herpetofauna, raptors, especially owls.

Connectivity Concerns: Very high road mortality rates, mainly coyotes (*Canis latrans*) and smaller, but occasionally deer (*Odocoileus hemionus*).

Remediation Goals: Camera, track monitoring, roadkill surveys, and an existing culvert assessment are all needed. There are many culverts large enough for wildlife, but blocked by sediment, debris, water, or fencing. Improving access to these culverts could greatly reduce roadkill.

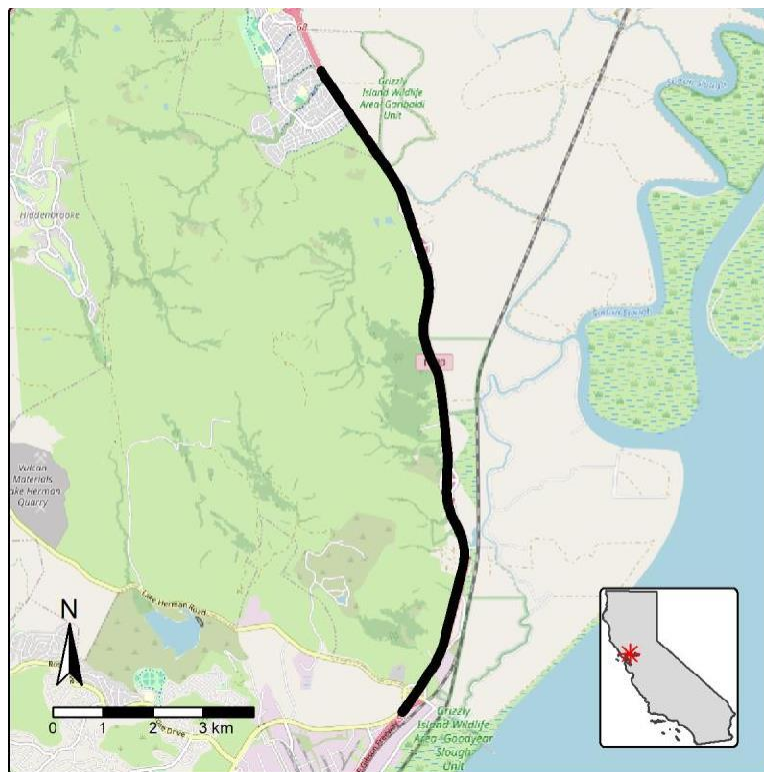


Figure: W199, I-680 in Gold Hill Road to Lake Herman Road.