



Region 3 Barrier ID: W201 (Barrier).

Barrier Name: SR-29.

Linear Infrastructure: SR-29.

Geographic Area: North of the city of Calistoga.

Length: 27.17 km (16.88 mi).

Target Species: Mountain lion (*Puma concolor*), mesocarnivores.

Connectivity Concerns: This road is a barrier across the Blue Ridge-Marine Coast and the Coast Range-Blue Ridge linkages and has very high road mortality rates.

Remediation Goals: This barrier requires more study including an existing structure assessment, feasibility study, and collar and camera data.

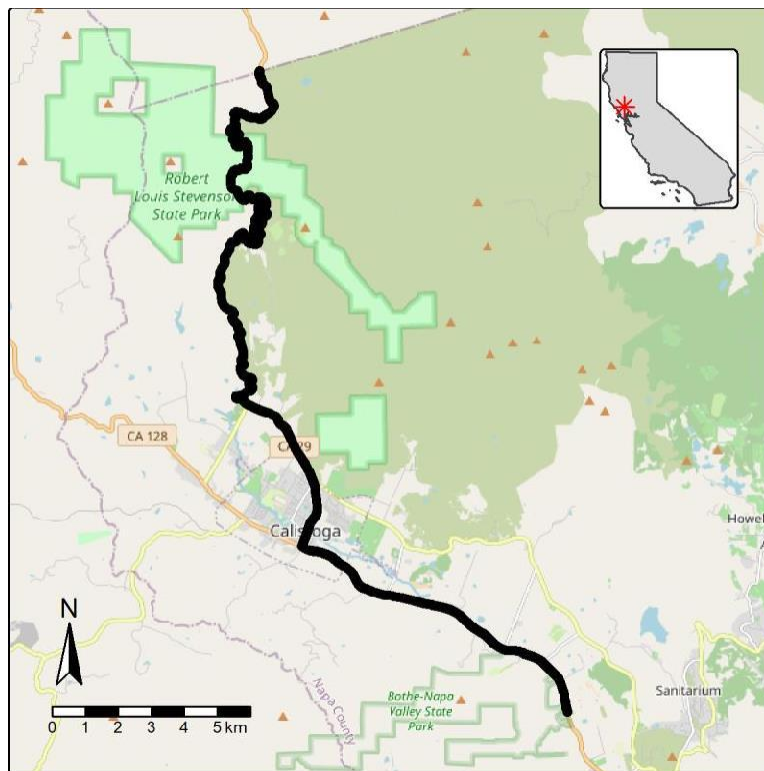


Figure: W201, SR-29 North of Calistoga.